

FACTSHEET CONCEPT

2026 SUMMER - 2026/2027 WINTER



DOWNLOAD
HOTEL INFORMATION


GLORIA
HOTELS & RESORTS



CONTENTS

GLORIA SERENITY RESORT	
GENERAL INFORMATION	03
ACCOMMODATION	04-10
ROOM OVERVIEW	10
VIP CONCEPT & PRIVILEGED SERVICES	11
SPECIAL ROOM TYPES PRIVILEGED SERVICES	11
FOOD AND BEVERAGE SERVICES	12
BARS	12
POOLS AND BEACH	13
SERENITY SPA	13
MEETINGS, ORGANIZATIONS AND WEDDINGS	14
MAP	14
GLORIA GOLF RESORT	
GENERAL INFORMATION	15
ACCOMMODATION	16-20
ROOM OVERVIEW	21
VIP CONCEPT & PRIVILEGED SERVICES	21
SPECIAL ROOM TYPES PRIVILEGED SERVICES	22
FOOD AND BEVERAGE SERVICES	22
BARS	23
LA SOURCE SPA	23
POOLS AND BEACH	24
AQUAPARK	25
MEETINGS, ORGANISATIONS AND WEDDINGS	26
MAP	26
GLORIA VERDE RESORT	
GENERAL INFORMATION	27
ACCOMODATION	28-31
ROOM OVERVIEW	32
VIP CONCEPT & PRIVILEGED SERVICES	32
SPECIAL ROOM TYPES PRIVILEGED SERVICES	33
FOOD AND BEVERAGE SERVICES	33
BARS	34
POOLS AND BEACH	34
AQUAPARK	35
ASKLEPION SPA & THALASSO	35
MAP	36
MEETINGS, ORGANISATIONS AND WEDDINGS	36
THE WORLD OF GLORIA	
CHILDREN AND TEENS ACTIVITIES	38
BABY AND CHILD NUTRITION	38
GLORIA EVENT & FIT GLORIA	39
GLORIA GOLF CLUB	40
GLORIA SPORTS ARENA	41
GLORIAN MEMBER CLUB	42
WALKING AND RUNNING PATH	42
GLORIA HOTELS & RESORTS MAPS	43

Gloria Hotels & Resorts reserves the right to make changes without notice. Gloria Hotels & Resorts is a brand of Özaltın Holding.

WELCOME TO GLORIA HOTELS & RESORTS!



The Gloria Hotels & Resorts brand, owned by Özaltın Holding, was established on an area of approximately 2,400,000 m² in Antalya - Belek and has been operating since 1997.

With a total of 1275 rooms, suites and ultra-luxury villas, Gloria Hotels & Resorts, with 30 different room categories, has been created with the aim of offering its guests a personalised and highly comfortable service. Gloria Hotels & Resorts offers its guests a privileged holiday experience in every season of the year, thanks to its location and the opportunity to be alone with nature at the same time.

Gloria Hotels & Resorts is known for its Gloria Serenity Resort, Gloria Golf Resort and Gloria Verde Resort brands, which have been serving in the tourism sector for many years, winning prestigious awards in different categories and being the three most successful 5-star hotels in their class. It is also a leader in the sector with the Gloria Sports Arena, one of the most exclusive sports investments in Europe, a modern complex where sports can be practised in more than 50 disciplines..

Designed by the famous French architect Michel Gayon, Gloria Golf Club is one of the most important representatives of golf in Turkey and the second largest golf course in Europe, with the only Trackman Driving Range in the region and three golf courses with a total of 45 holes.

Gloria Hotels & Resorts, which continues its activities with its innovations and visionary perspective, has been hosting prestigious organizations for many years with Gloria Convention Centre, as well as meeting all meeting requirements for all needs at international standards.



GLORIA SERENITY RESORT

The Joy of Variety

Gloria Serenity, where peace and luxury are surrounded by the natural colours of the universe, will satisfy your expectations of comfort and taste, as well as your children's enjoyment.



GENERAL INFORMATION

Gloria Serenity Resort opening date: 2007
 Category: 5* Hotel
 Company: Özaltın Holding
 Season: full year
 Gloria Hotels & Resorts total area: 2.400.000 m²
 Gloria Serenity Resort area: 205.000 m²
 Address: Belek Mah. Turizm Cad. No: 74/57
 Serik / Antalya / Türkiye
 Telephone: +90 242 710 23 00
 E-mail: info@gloria.com.tr
 Website: www.gloria.com.tr
 WI-FI: rooms and public areas (free of charge)
 high-speed internet in rooms and public areas (surcharge)
 Credit cards: Visa, Mastercard, Amex
 Languages Spoken: Turkish, English, Russian, German
 To download current pictures, videos, and factsheets: stock.gloria.com.tr

ACCOMMODATION

The facility consists of 1 main building and 97 villas. The main building consist of 5 floors and there are 7 elevators in total. All villas consist of 2 floors.

ACCOMMODATION POLICY

Pets not allowed
 Hotel check-in time: 06:00
 Hotel check-out time: 19:00
 Room check-in time: 15:00
 Room check-out time: 12:00
 Early check-in and late check-out policy: Early check-in or late check-out is subject to availability. Depending on availability, early check-in before 06:00 or late check-out after 19:00, 100% of the daily room rate is applied. Early check-in and late check out rates are applied in other time zones as determined by the hotel.
 Smoking: The use of tobacco products and electronic cigarettes is not permitted indoors.
 Age limit policy: Guests under 18 years of age are not accommodated without a parent.
 Visitor policy: Hotel guests may receive visitors at the hotel between 09:00 and 23:00, subject to an additional fee. Visitors are required to present their passport or identification card at the entrance. Visitors are not permitted to enter guest rooms. Gloria Hotels & Resorts reserves the right to refuse this service at its sole discretion.
 Transfer between hotels: Guests are provided with free shuttle service between Gloria Hotels.

LOCATION & TRANSPORT

Antalya Airport: 40 km
 Gazipaşa Airport: 148 km
 Antalya city centre: 50 km
 Nearest settlement centre: 7 km (Belek)
 Beach: Private sand/gravel beach and 1 pier
 Gloria Golf Club: 1,5 km

ROOM DETAILS

Total Rooms: 367
 Superior Rooms: 250
 Suites: 20
 Villas: 97
 Bed Capacity: 971
 Floor Plan:
 172 Superior Oda + 3 Disabled Rooms
 24 Superior Sea View Rooms
 51 Superior Laguna Rooms
 18 Suites
 2 King Suites
 52 Garden Villas
 30 Pool Villas
 10 Deluxe Villas
 1 Serenity Villa
 1 Queen Villa
 1 King Villa
 1 VIP Villa
 1 Presidential Villa

SUPERIOR ROOM

Main building | 39 m² | Garden or pool view
Maximum number of Person: 2 adults + 2 children (0 - 11.99) | 3 adults



ROOM FEATURES

- 1 room
- Smart panel-controlled room lighting
- Smart panel-controlled curtains
- Smart panel-controlled central air conditioning
- Parquet floor
- Wardrobe
- Seating area with sofa
- Decorative coffee table
- Table and chair set
- Full-length mirror
- Suitcase rack
- Balcony or terrace (Sunbeds are available in garden floor rooms)
- Chairs and coffee table set on the balcony or terrace
- Laundry drying rack on the balcony or terrace

BED

- 2 single beds (120x200) or 1 french bed (180x200)
- Special manufactured mattress
- Pillow menu
- Baby Cot (available on request, 70x110)
- Sofa 90x190
- Rollaway extra bed (available on request, 100x190)

BATHROOM

- Shower cabin and WC
- Bvlgari bath and shower products
- Baby bath products (optional)
- Children's bathrobe (optional, 2 - 11.99)
- Bathrobe
- Slippers
- Illuminated make-up mirror
- Hair dryer
- Scales

TECHNOLOGY

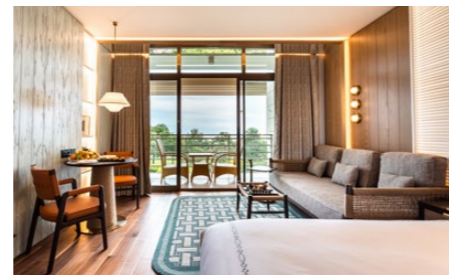
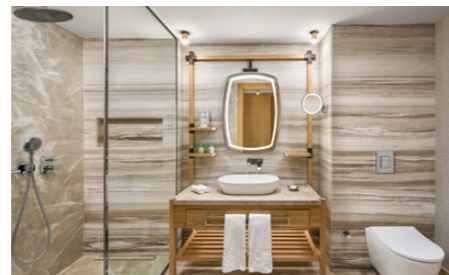
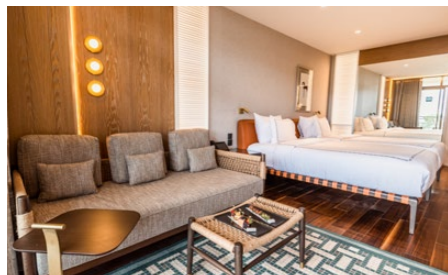
- Smart home control system
- 1 mirror view television (Mirror TV)
- Phone with smart panel
- Digital safe
- Wireless internet access
- USB Port, Type-C Port

SERVICES & FACILITIES

- Glorian Guest Assistant (Gloria mobile application)
- Nespresso capsule coffee machine (with hot water option)
- Organic herbal tea selections
- Minibar (replenished free of charge once daily)
- Room fragrance options
- Daily housekeeping service
- Daily towel change
- Bed linen change every other day
- Iron and ironing board (available upon request)
- Laundry services (available for a fee, from 08:00 to 00:00)



*There are 3 Superior rooms that are tailored to the needs of our disabled guests.



SUPERIOR SEA VIEW ROOM

Main building | 39 m² | Sea view | 3rd and 4th floor
Maximum number of Person: 2 adults + 2 children (0 - 11.99) | 3 adults



ROOM FEATURES

- 1 room
- Smart panel-controlled room lighting
- Smart panel-controlled curtains
- Smart panel-controlled central air conditioning
- Parquet floor
- Wardrobe
- Seating area with sofa
- Decorative coffee table
- Table and chair set
- Full-length mirror
- Suitcase rack
- Balcony
- Chairs and coffee table set on the balcony
- Laundry drying rack on the balcony

BED

- 2 single beds (120x200) or 1 french bed (180x200)
- Special manufactured mattress
- Pillow menu
- Baby Cot (available on request, 70x110)
- Sofa 90x190
- Rollaway extra bed (available on request, 100x190)

BATHROOM

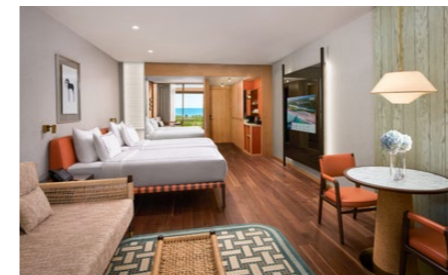
- Shower cabin and WC
- Bvlgari bath and shower products
- Baby bath products (optional)
- Children's bathrobe (optional, 2 - 11.99)
- Bathrobe
- Slippers
- Illuminated make-up mirror
- Hair dryer
- Scales

TECHNOLOGY

- Smart home control system
- 1 mirror view television (Mirror TV)
- Phone with smart panel
- Digital safe
- Wireless internet access
- USB Port, Type-C Port

SERVICES & FACILITIES

- Glorian Guest Assistant (Gloria mobile application)
- Nespresso capsule coffee machine (with hot water option)
- Organic herbal tea selections
- Minibar (replenished free of charge once daily)
- Room fragrance options
- Daily housekeeping service
- Daily towel change
- Bed linen change every other day
- Iron and ironing board (available upon request)
- Laundry services (available for a fee, from 08:00 to 00:00)



SUPERIOR LAGUNA ROOM

Main building | 39 m² | Direct access to shared pool | Ground floor
Maximum number of Person: 2 adults + 2 children (0 - 11.99) | 3 adults



ROOM FEATURES

- 1 room
- Smart panel-controlled room lighting
- Smart panel-controlled curtains
- Smart panel-controlled central air conditioning
- Parquet floor
- Wardrobe
- Seating area with sofa
- Decorative coffee table
- Table and chair set
- Full-length mirror
- Suitcase rack
- Terrace
- Sun loungers and table on the terrace
- Laundry drying rack on the terrace

BED

- 2 single beds (120x200) or 1 french bed (180x200)
- Special manufactured mattress
- Pillow menu
- Baby Cot (available on request, 70x110)
- Sofa 90x190
- Rollaway ekstra bed (available on request, 100x190)

BATHROOM

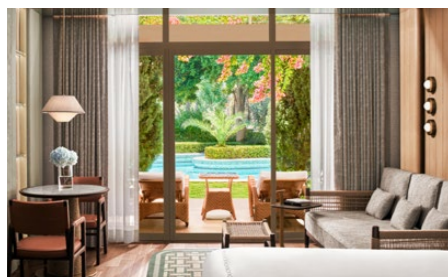
- Shower cabin and WC
- Bvlgari bath and shower products
- Baby bath products (optional)
- Children's bathrobe (optional, 2 - 11.99)
- Bathrobe
- Slippers
- Illuminated make-up mirror
- Hair dryer
- Scales

TECHNOLOGY

- Smart home control system
- 1 mirror view television (Mirror TV)
- Phone with smart panel
- Digital safe
- Wireless internet access
- USB Port, Type-C Port

SERVICES & FACILITIES

- Glorian Guest Assistant (Gloria mobile application)
- Nespresso capsule coffee machine (with hot water option)
- Organic herbal tea selections
- Minibar (replenished free of charge once daily)
- Room fragrance options
- Daily housekeeping service
- Daily towel change
- Bed linen change every other day
- Iron and ironing board (available upon request)
- Laundry services (available for a fee, from 08:00 to 00:00)



SUITE

Main building | 65 m² | Garden or pool view
Maximum number of Person: 2 adults + 2 children (0 - 11.99) | 3 adults + 1 child (0 - 11.99)



ROOM FEATURES

- 2 rooms: 1 bedroom & 1 living room
- Smart panel-controlled room lighting
- Smart panel-controlled curtains
- Smart panel-controlled central air conditioning
- Parquet floor
- Seating area with sofa and single armchair
- Table chair set
- Decorative coffee table
- Wardrobe
- Full-length mirror
- Suitcase rack
- Balcony or terrace
- Chairs and coffee table set on the balcony or terrace
- Laundry drying rack on the balcony or terrace

BED

- 1 french bed (180x200)
- Special manufactured mattress
- Pillow menu
- Baby Cot (available on request, 70x110)
- Sofa 90x190
- Rollaway ekstra bed (available on request, 100x190)

BATHROOM

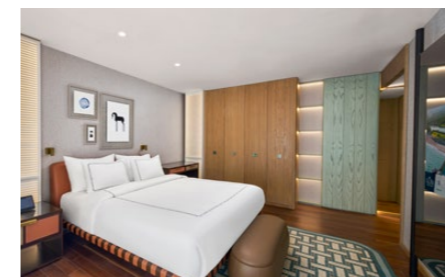
- Shower cabin and WC (single bathroom)
- Guest washbasin and WC
- Bvlgari bath and shower products
- Baby bath products (optional)
- Children's bathrobe (optional, 2 - 11.99)
- Bathrobe
- Slippers
- Illuminated make-up mirror
- Hair dryer
- Scales

TECHNOLOGY

- Smart home control system
- 1 mirror-view television (Mirror TV) and 1 LCD TV
- Phone with smart panel
- Digital safe
- Wireless internet access
- USB Port, Type-C Port

SERVICES & FACILITIES

- Glorian Guest Assistant (Gloria mobile application)
- Nespresso capsule coffee machine (with hot water option)
- Organic herbal tea selections
- Minibar (replenished free of charge once daily)
- Room fragrance options
- Daily housekeeping service
- Daily towel change
- Bed linen change every other day
- Iron and ironing board (available upon request)
- Laundry services (available for a fee, from 08:00 to 00:00)



KING SUITE

Main building | 160 m² | Sea and garden view
Maximum number of Person: 4 adults + 2 children (0 - 11.99) | 5 adults



ROOM FEATURES

- 3 rooms: 2 bedrooms & 1 living room
- Smart panel-controlled room lighting
- Smart panel-controlled curtains
- Smart panel-controlled central air conditioning
- Parquet floor
- Living room: dining table and chair set, sofa and 2 single armchairs, seating area with coffee table, coffee and tea corner with bench and sink
- 1st bedroom: One double bed, a seating area with a sofa and two armchairs, coffee table, work desk, two dressing areas, and a balcony
- 2nd bedroom: Two single beds, a walk-in dressing room, and direct access to a balcony with a jacuzzi
- Wardrobe
- Full-length mirror
- Suitcase rack
- 2 balconies, 1 with jacuzzi
- Set of chairs and coffee table on the balcony
- Laundry drying rack on the balcony

BED

- 1st bedroom: 1 french bed (180x200)
- 2nd bedroom: 2 single beds (120x200)
- Special manufactured mattress
- Pillow menu
- Baby Cot (available on request, 70x110)
- Sofa 90x190
- Rollaway ekstra bed (available on request, 100x190)

BATHROOM

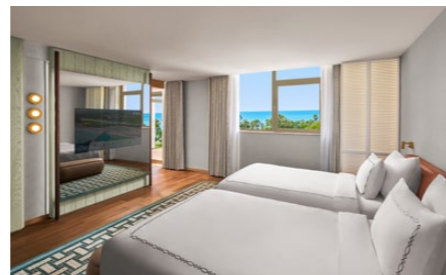
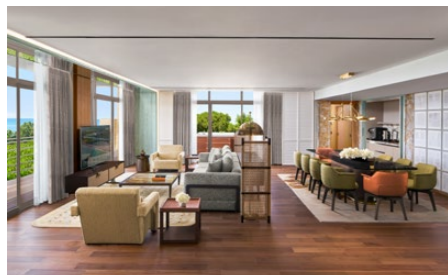
- 1st bathroom: shower cabin, bath, double washbasin and WC
- 2nd bathroom: shower cabin and WC
- 3rd bathroom: shower cabin and WC
- Bvlgari bath and shower products
- Baby bath products (optional)
- Children's bathrobe (optional, 2 - 11.99)
- Bathrobe
- Slippers
- Illuminated make-up mirror
- Hair dryer
- Scales

TECHNOLOGY

- Smart home control system
- 1 mirror-view television (Mirror TV) and 2 LCD TV's
- Phone with smart panel
- Digital safe
- High-speed wireless internet access
- USB and Type-C

SERVICES & FACILITIES

- Glorian Guest Service Agent
- Round-trip transfer service (once during the stay)
- Fast Track service (per person)
- One pavilion (during the summer season, rows 2-5)
- Nespresso capsule coffee machine (with hot water option)
- Electric kettle and Turkish coffee machine
- Organic herbal tea selections
- Minibar (replenished free of charge once daily)
- Room fragrance options
- Daily housekeeping service
- Daily towel change
- Bed linen change every other day
- Turndown service
- Iron and ironing board
- Laundry services (available for a fee, from 08:00 to 00:00)



GARDEN VILLA

Garden | Duplex | 86 m² | Garden view
Maximum number of Person: 4 adults + 2 children (0 - 11.99) | 5 adults



ROOM FEATURES

- 3 rooms: 2 bedrooms & 1 living room
- Smart panel-controlled room lighting
- Smart panel-controlled curtains
- VRF (individual) air conditioning with smart panel-control
- Marble floor (on the ground floor)
- Parquet floor (upstairs)
- Living room: bar corner, dining table and chair set, seating area and coffee table
- 1st bedroom: 1 french bed, bar corner, dressing table with pouf and mirror
- 2nd bedroom: 2 single beds
- Wardrobe
- Full-length mirror
- Suitcase rack
- Private terrace with jacuzzi
- Table and chair set on the terrace
- Laundry drying rack on the terrace

BED

- 1st bedroom: 1 french bed (200x200)
- 2nd bedroom: 2 single beds (120x200)
- Special manufactured mattress
- Pillow menu
- Baby Cot (available on request, 70x110)
- Rollaway ekstra bed (available on request, 100x190)
- Sofa (90x290 & 110x200)

BATHROOM

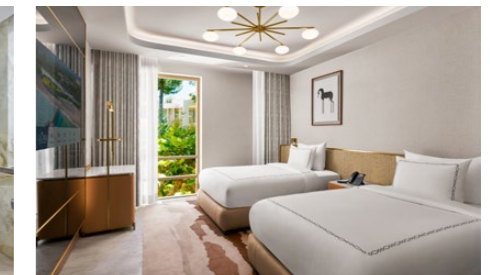
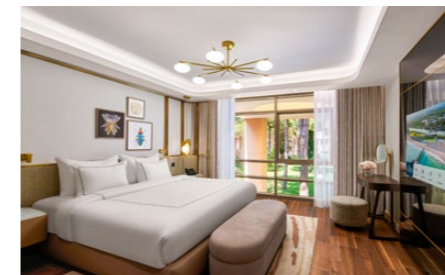
- 2 separate bathrooms and 2 WCs
- 1st bathroom: double washbasin, shower cabin and WC
- 2nd bathroom: shower cabin and WC
- Bvlgari bath and shower products
- Baby bath products (optional)
- Children's bathrobe (optional, 2 - 11.99)
- Bathrobe
- Slippers
- Hair dryer
- Scales

TECHNOLOGY

- Smart home control system
- 3 mirror-view televisions (Mirror TV)
- USB and Type-C
- Phone with smart panel
- Digital safe
- Wireless internet access

SERVICES & FACILITIES

- Glorian Guest Service Agent
- Nespresso capsule coffee machine (with hot water option)
- Organic herbal tea selections
- Minibar (replenished free of charge once daily)
- Room fragrance options
- Daily housekeeping service
- Daily towel change
- Bed linen change every other day
- Iron and ironing board (available upon request)
- Laundry services (available for a fee, from 08:00 to 00:00)



POOL VILLA

Garden | Duplex | 86 m² | Shared pool view
Maximum number of Person: 4 adults + 2 children (0 - 11.99) | 5 adults



ROOM FEATURES

- 3 rooms: 2 bedrooms & 1 living room
- Smart panel-controlled room lighting
- Smart panel-controlled curtains
- VRF (individual) air conditioning with smart panel control
- Marble floor (on the ground floor)
- Parquet floor (upstairs)
- Living room: bar corner, dining table and chair set, seating area and coffee table
- 1st bedroom: 1 french bed, bar corner, dressing table with pouf and mirror
- 2nd bedroom: 2 single beds
- Wardrobe
- Full-length mirror
- Suitcase rack
- Private terrace with jacuzzi
- Table and chair set on the terrace
- Laundry drying rack on the terrace

BED

- 1st bedroom: 1 french bed (200x200)
- 2nd bedroom: 2 single beds (120x200)
- Special manufactured mattress
- Pillow menu
- Baby Cot (available on request, 70x110)
- Rollaway ekstra bed (available on request, 100x190)
- Sofa (90x290 & 110x200)

BATHROOM

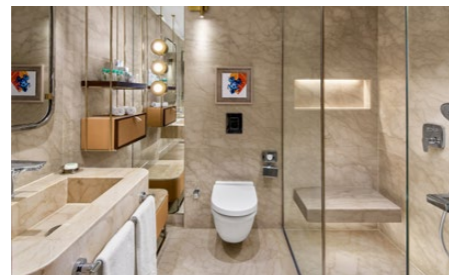
- 2 separate bathrooms and 2 WCs
- 1st bedroom: double washbasin, shower cabin and WC
- 2nd bedroom: shower cabin and WC
- Bvlgari bath and shower products
- Baby bath products (optional)
- Children's bathrobe (optional, 2 - 11.99)
- Bathrobe
- Slippers
- Hair dryer
- Scales

TECHNOLOGY

- Smart home control system
- 3 mirror-view televisions (Mirror TV)
- USB Port, Type-C Port
- Phone with smart panel
- Digital safe
- Wireless internet access

SERVICES & FACILITIES

- Glorian Guest Service Agent
- Nespresso capsule coffee machine (with hot water option)
- Organic herbal tea selections
- Minibar (replenished free of charge once daily)
- Room fragrance options
- Daily housekeeping service
- Daily towel change
- Bed linen change every other day
- Iron and ironing board (available upon request)
- Laundry services (available for a fee, from 08:00 to 00:00)



DELUXE VILLA

Garden | Duplex | 200 m² | Garden, golf course and private pool view
Maximum number of Person: 6 adults + 2 children (0 - 11.99) | 7 adults



ROOM FEATURES

- 4 rooms: 3 bedrooms & 1 living room
- Smart panel-controlled room lighting
- Smart panel-controlled tulle and background curtains
- VRF (individual) air conditioning with smart panel control
- Marble floor (on the ground floor)
- Parquet floor (upstairs)
- Living room: bar corner, dining table and chair set, seating area, 2 single armchairs and coffee table
- 1st bedroom: 1 french bed, bar corner, vanity table with pouf and mirror, single armchair, lounge chair and dressing area
- 2nd bedroom: 2 single beds, single armchair, and coffee table
- 3rd bedroom: 2 single beds, dressing table with pouf and mirror
- Wardrobe
- Full-length mirror
- Suitcase rack
- Private terrace
- Table and chair set on the terrace
- Laundry drying rack on the terrace
- Baby crib on the terrace
- Private outdoor pool (fresh water, sea water and heating options, 140 cm deep, 52 m²)
- Hammock and sunbeds by the pool

BED

- Upstairs:
 - 1st bedroom: 1 french bed (180x210)
 - 2nd bedroom: 2 single beds (120x210)
- Ground floor:
 - 3rd bedroom: 2 single beds (110x210)
 - Special manufactured mattress
 - Pillow menu
 - Baby Cot (available on request, 70x110)
 - Rollaway ekstra bed (available on request, 100x190)
 - Sofa (210x340)

BATHROOM

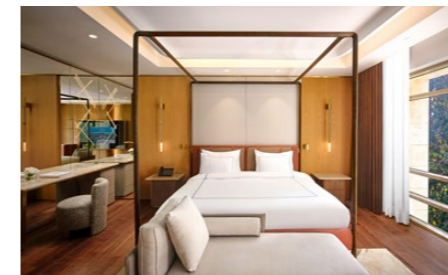
- 4 separate bathrooms and 4 WCs
- Upstairs:
 - 1st bathroom: shower cabin, bathtub, double washbasin, and WC
 - 2nd bathroom: shower cabin and WC
- Ground floor:
 - 3rd bathroom: shower cabin and WC
 - 4th bathroom: shower cabin and WC
 - VIP Bvlgari bath and shower products
 - Baby bath products (optional)
 - Children's bathrobe (optional, 2 - 11.99)
 - Bathrobe
 - Slippers
 - Hair dryer
 - Scales

TECHNOLOGY

- Smart home control system
- 4 mirror-view televisions (Mirror TV)
- Bang & Olufsen sound system
- Phone with smart panel
- Digital safe
- High-speed wireless internet access
- USB Port, Type-C Port

SERVICES & FACILITIES

- Glorian Guest Service Agent
- Round-trip transfer service (once during the stay)
- Fast Track service (per person)
- 1 buggy
- 1 pavilion (during the summer season, rows 2-5)
- Private butler service (08:00-21:30)
- Zone butler service (21:30-00:00)
- Nespresso capsule coffee machine (with hot water option)
- Organic herbal tea selections
- Minibar (replenished free of charge once daily)
- Room fragrance options
- Daily housekeeping service
- Daily towel change
- Bed linen change every other day
- Turndown service
- Iron and ironing board
- Laundry services (available for a fee, from 08:00 to 00:00)



SERENITY VILLA

Garden | Duplex | 200 m² | Garden, golf course and private pool view
Maximum number of Person: 6 adults + 2 children (0 - 11.99) | 7 adults



ROOM FEATURES

- 4 rooms: 3 bedrooms & 1 living room
- Smart panel-controlled room lighting
- Smart panel-controlled curtains
- VRF (individual) air conditioning with smart panel control
- Marble and parquet flooring
- Kitchenette: countertop, sink, stove, range hood, mini refrigerator, dishwasher, tea maker, Turkish coffee machine, milk frother, wine cooler, microwave oven.
- Living room: dining table with chairs, seating area with sofa, ottoman, armchair and coffee table, fireplace
- 1st bedroom: 1 double bed, lounge chair, armchair and side table, dressing area, bathtub
- 2nd bedroom: 2 single beds, vanity table with ottoman and mirror
- 3rd bedroom: 2 single beds, armchair and side table, vanity table with ottoman and mirror
- Wardrobe
- Full-length mirror
- Suitcase rack
- Private terrace (jacuzzi and fire pit)
- Terrace seating area, table and chair set
- Laundry drying rack on the terrace
- Private outdoor swimming pool
- (freshwater, seawater and heating options, 140 cm depth, 94 m²)
- Sunbeds by the pool

BED

- Upstairs:
 - 1st bedroom: 1 french bed (200x200)
- Ground floor:
 - 2 single beds (100x200)
 - 3rd bedroom: 2 single beds (100x200)
- Special manufactured bed
- Pillow menu
- Baby Cot (available on request, 70x110)
- Rollaway ekstra bed (available on request, 100x190)

BATHROOM

- 3 separate bathrooms and 4 WCs
- Upstairs:
 - 1st bathroom: shower cabin, double washbasin, and WC
- Ground floor:
 - 2nd bathroom: shower cabin and WC
 - 3rd bathroom: shower cabin and WC
- VIP Bvlgari bath and shower products
- Baby bath products (optional)
- Children's bathrobe (optional, 2 - 11.99)
- Bathrobe
- Slippers
- Hair dryer
- Scales

TECHNOLOGY

- Smart home control system
- 2 mirror view televisions (Mirror TV) and 2 LCD televisions
- Sound system
- Phone with smart panel
- Digital safe
- High-speed wireless internet access
- USB Port, Type-C Port

SERVICES & FACILITIES

- Glorian Guest Service Agent
- Round-trip transfer service (once during the stay)
- Fast Track service (per person)
- 1 buggy
- 1 pavilion (during the summer season, 1st row)
- Private butler service (08:00-21:30)
- Zone butler service (21:30-00:00)
- Nespresso capsule coffee machine (with hot water option)
- Organic herbal tea selections
- Minibar (replenished free of charge once daily)
- Room fragrance options
- Daily housekeeping service
- Daily towel change
- Bed linen change every other day
- Turndown service
- Iron and ironing board
- Laundry services (available for a fee, from 08:00 to 00:00)



QUEEN VILLA

Garden | Duplex | 250 m² | Garden, golf course and private pool view
Maximum number of Person: 8 adults + 2 children (0 - 11.99) | 8 adults



ROOM FEATURES

- Smart panel-controlled room lighting
- Smart panel-controlled curtains
- VRF (individual) air conditioning with smart panel control
- Marble and parquet flooring
- Kitchenette: countertop, sink, stove, range hood, mini refrigerator, dishwasher, tea maker, Turkish coffee machine, milk frother, wine cooler, microwave oven
- Living room: dining table with chair set; seating area featuring a sofa, ottoman, armchair and coffee table; fireplace
- 1st bedroom: 1 double bed, lounge chair, armchair and coffee table, dressing area, vanity table with ottoman and mirror
- 2nd bedroom: 2 single beds, armchair and coffee table
- 3rd bedroom: 2 single beds, armchair and coffee table, vanity table with ottoman and mirror
- 4th bedroom: 2 single beds
- Wardrobe
- Full-length mirror
- Suitcase rack
- Private terrace (jacuzzi and fire pit)
- Terrace seating area, table and chair set
- Laundry drying rack on the terrace
- Private outdoor swimming pool
- (freshwater, seawater and heating options, 140 cm depth, 100 m²)
- Sunbeds by the pool

BED

- Upstairs:
 - 1st bedroom: 1 french bed (200x200)
- 2nd bedroom: 2 single beds (90x200)
- 3rd bedroom: 2 single beds (120x200)
- Ground floor:
 - 4th bedroom: 2 single beds (100x200)
- Special manufactured mattress
- Pillow menu
- Baby Cot (available on request, 70x110)
- Rollaway ekstra bed (available on request, 100x190)

BATHROOM

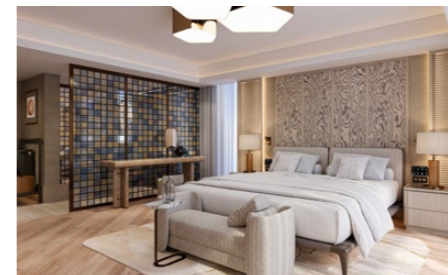
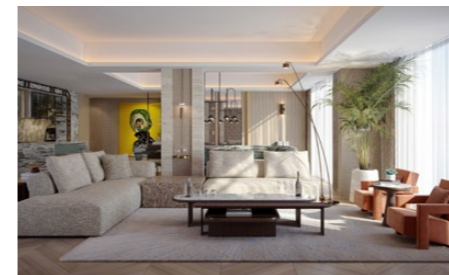
- 4 separate bathrooms and 5 WCs
- Upstairs:
 - 1st bathroom: shower cabin double washbasin and WC
- 2nd bathroom: shower cabin and WC
- 3rd bathroom: shower cabin and WC
- Ground floor:
 - Guest washbasin and WC
 - 4th bathroom: shower cabin and WC
- VIP Bvlgari bath and shower products
- Baby bath products (optional)
- Children's bathrobe (optional, 2 - 11.99)
- Bathrobe
- Slippers
- Hair dryer
- Scales

TECHNOLOGY

- Smart home control system
- 3 mirror-view televisions (Mirror TV) and 2 LCD TVs
- Sound system
- Phone with smart panel
- Digital safe
- High-speed wireless internet access
- USB Port, Type-C Port

SERVICES & FACILITIES

- Glorian Guest Service Agent
- Round-trip transfer service (once during the stay)
- Fast Track service (per person)
- 2 buggies
- 1 pavilion (during the summer season, 1st row)
- Private butler service (08:00-21:30)
- Zone butler service (21:30-00:00)
- Nespresso capsule coffee machine (with hot water option)
- Organic herbal tea selections
- Minibar (replenished free of charge once daily)
- Room fragrance options
- Daily housekeeping service
- Daily towel change
- Bed linen change every other day
- Turndown service
- Iron and ironing board
- Laundry services (available for a fee, from 08:00 to 00:00)



KING VILLA

Garden | Duplex | 250 m² | Garden, golf course and private pool view
Maximum number of Person: 8 adults + 2 children (0 - 11.99) | 8 adults



ROOM FEATURES

- Smart panel-controlled room lighting
- Smart panel-controlled curtains
- Smart panel-controlled VRF (independent) air conditioning
- Marble and parquet flooring
- Kitchenette: countertop, sink, stove, range hood, mini refrigerator, dishwasher, tea maker, Turkish coffee machine, milk frother, wine cooler, microwave oven
- Living room: dining table with chair set; seating area with a sofa, ottoman, armchair and coffee table; fireplace
- 1st bedroom: 1 double bed, lounge chair, armchair and coffee table, dressing area, vanity table with ottoman and mirror
- 2nd bedroom: 2 single beds, armchair and coffee table
- 3rd bedroom: 2 single beds, armchair and ottoman and mirror
- 4th bedroom: 2 single beds
- Wardrobe
- Full-length mirror
- Suitcase rack
- Private terrace (jacuzzi and fire pit)
- Terrace seating area, table and chair set
- Laundry drying rack on the terrace
- Private outdoor swimming pool (freshwater, seawater and heating options, 140 cm depth, 100 m²)
- Sunbeds by the pool

BED

- Upstairs:
 - 1st bedroom: 1 french bed (200x200)
 - 2nd bedroom: 2 single beds (90x200)
 - 3rd bedroom: 2 single beds (120x200)
- Ground floor:
 - 4th bedroom: 2 single beds (100x200)
- Special manufactured mattress
- Pillow menu
- Baby Cot (available on request, 70x110)
- Rollaway ekstra bed (available on request, 100x190)

BATHROOM

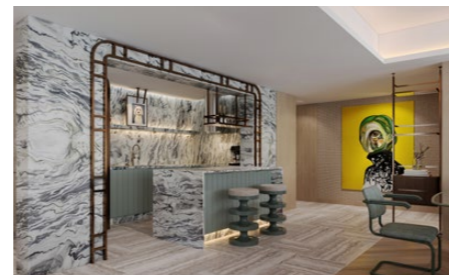
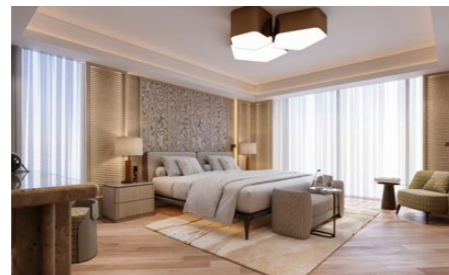
- 4 separate bathrooms and 5 WCs
- Upstairs:
 - 1st bathroom: shower cabin, double washbasin and WC
 - 2nd bathroom: shower cabin and WC
 - 3rd bathroom: shower cabin and WC
- Ground floor:
 - 4th bathroom: shower cabin and WC
- VIP Bvlgari bath and shower products
- Baby bath products (optional)
- Children's bathrobe (optional, 2 - 11.99)
- Bathrobe
- Slippers
- Hair dryer
- Scales

TECHNOLOGY

- Smart home control system
- 3 mirror view televisions (Mirror TV) and 2 LCD televisions
- Sound system
- Phone with smart panel
- Digital safe
- High-speed wireless internet access
- USB Port, Type-C Port

SERVICES & FACILITIES

- Glorian Guest Service Agent
- Round-trip transfer service (once during the stay)
- Fast Track service (per person)
- 2 buggies
- 1 pavilion (during the summer season, 1st row)
- Private butler service (08:00-21:30)
- Zone butler service (21:30-00:00)
- Nespresso capsule coffee machine (with hot water option)
- Organic herbal tea selections
- Minibar (replenished free of charge once daily)
- Room fragrance options
- Daily housekeeping service
- Daily towel change
- Bed linen change every other day
- Turndown service
- Iron and ironing board
- Laundry services (available for a fee, from 08:00 to 00:00)



VIP VILLA

Garden | Duplex | 400 m² | Garden, golf course and private pool view
Maximum number of Person: 8 adults + 2 children (0 - 11.99) | 8 adults



ROOM FEATURES

- 5 rooms: 4 bedrooms & 1 living room
- Smart panel - controlled room lighting
- Smart panel - controlled curtains
- VRF (individual) air conditioning with smart panel control
- Study room (desktop computer, work desk, chair and side table)
- Marble and parquet flooring (ground floor)
- Parquet flooring (upper floor)
- Fully equipped private kitchen: countertop, sink, cooktop, oven, extractor hood, refrigerator and dishwasher
- SPA area (sauna, steam room, jacuzzi, two massage beds, treadmill, shower and WC)
- Living room: bar unit, dining table with chair set, seating area with sofa and coffee table, decorative fireplace
- 1st bedroom: 1 double bed, vanity table with ottoman and mirror, armchair, lounge chair, dressing area and bathtub
- 2nd bedroom: 2 single beds, armchair and coffee table
- 3rd bedroom: 2 single beds
- 4th bedroom: 1 double bed, armchair and coffee table
- Wardrobe
- Full-length mirror
- Suitcase rack
- Private terrace (200 m²)
- Terrace seating area with coffee table, table and chair set
- Laundry drying rack on the terrace
- Private outdoor swimming pool (freshwater, seawater and heating options, 140 cm depth, 92 m²)
- Hammock and sunbeds by the pool
- Private parking for the villa

BED

- Upstairs:
 - 1st bedroom: 1 french bed (200x200)
 - 2nd bedroom: 2 single beds (140x200)
 - 3rd bedroom: 2 single beds (140x200)
- Ground floor:
 - 4th bedroom: 1 french bed (180x200)
- Special manufactured mattress
- Pillow menu
- Baby Cot (available on request, 70x110)
- Rollaway ekstra bed (available on request, 100x190)

BATHROOM

- 5 separate bathrooms and 6 WCs
- Upstairs:
 - 1st bathroom: shower cabin, double washbasin, and WC
 - 2nd bathroom: shower cabin and WC
 - 3rd bathroom: shower cabin and WC
- Ground floor:
 - Guest washbasin and WC
 - 4th bathroom: shower cabin and WC
 - 5th bathroom (SPA area): shower cabin and WC
- VIP Bvlgari bath and shower products
- Baby bath products (optional)
- Children's bathrobe (optional, 2 - 11.99)
- Bathrobe
- Slippers
- Hair dryer
- Scales

TECHNOLOGY

- Smart home control system
- 4 mirror-view televisions (Mirror TV) and 3 LCD TVs
- Bang & Olufsen sound system
- Phone with smart panel
- Digital safe box
- High-speed wireless internet access
- USB Port, Type-C Port

SERVICES & FACILITIES

- Glorian Guest Service Agent
- Round-trip transfer service (once during the stay)
- Fast Track service (per person)
- 2 buggies
- 1 pavilion (during the summer season, 1st row)
- Private butler service (08:00-21:30)
- Zone butler service (21:30-00:00)
- Chef and maid
- Nespresso capsule coffee machine (with hot water option)
- Electric kettle, Turkish coffee machine, filter coffee machine, hot water boiler
- Organic herbal tea selections
- Minibar (replenished free of charge once daily)
- Room fragrance options
- Daily housekeeping service
- Daily towel change
- Bed linen change every other day
- Turndown service
- Iron and ironing board
- Laundry services (available for a fee, from 08:00 to 00:00)



PRESIDENTIAL VILLA

Garden | Duplex | 1400 m² | Garden, golf course and private pool view
Maximum number of Person: 12 adults + 2 children (0 - 11.99) | 12 adults



ROOM FEATURES

- 2 staff bedrooms
- Elevator
- VRF (independent) air conditioning
- Parquet flooring
- Private professional kitchen
- SPA area (fitness room, Turkish bath, sauna, steam room, jacuzzi, massage room, shower and WC)
- Billiards room
- Cinema room
- Study room (desktop computer, meeting table, seating set with armchairs and coffee table)
- Living room: bar area, dining table with chair set, seating area with sofa and coffee table
- Walk-in dressing room in the master bedroom
- Wardrobe
- Sheer and blackout curtains
- Full-length mirror
- Suitcase rack
- Spacious upper-floor balcony with sun loungers and jacuzzi
- Private terrace (300 m²)
- Terrace seating area with coffee table, table and chair set
- Laundry drying rack on the terrace
- Private outdoor swimming pool (freshwater, seawater and heating options, 140 cm depth, 133 m²)
- Hammock and sunbeds by the pool
- Poolside gazebo (seating area)
- Private parking for the villa

BED

- Upstairs:
 - 1st bedroom: 1 french bed (200x200)
 - 2nd bedroom: 1 french bed (160x200)
 - 3rd bedroom: 1 french bed (160x200)
 - 4th bedroom: 2 single beds (100x200)
 - 5th bedroom: 2 single beds (100x200)
 - 6th bedroom: 2 single beds (100x200)
- Special manufactured mattress
- Pillow menu
- Baby Cot (available on request, 70x110)
- Rollaway ekstra bed (available on request, 100x190)

BATHROOM

- 7 separate bathrooms and 9 WCs
- Upstairs:
 - 1st bathroom: double washbasin, shower cabin, jacuzzi and WC
 - 2nd bathroom: double washbasin, jacuzzi and WC
 - 3rd bathroom: double washbasin, shower cabin, jacuzzi and WC
 - 4th bathroom: shower cabin and WC
 - 5th bathroom: shower cabin and WC
 - 6th bathroom: shower cabin and WC
 - 7th bathroom (SPA area): shower cabin and WC
- Guest washbasin and WC
- Separate shower and WC in staff bedrooms
- VIP Bvlgari bath and shower products
- Baby bath products (optional)
- Children's bathrobe (optional, 2 - 11.99)
- Bathrobe
- Slippers
- Illuminated make-up mirror

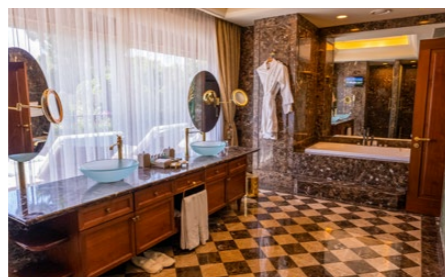
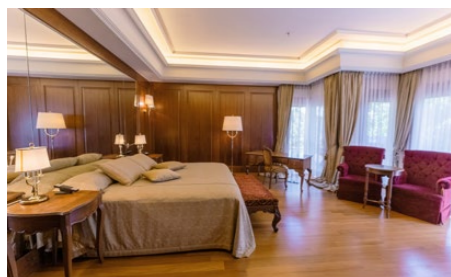
- Hair dryer
- Telephone
- Scales

TECHNOLOGY

- 9 LCD TVs - IP TV
- Bang & Olufsen sound system
- Telephone
- Safe deposit box
- High-speed wireless internet access

SERVICES & FACILITIES

- Glorian Guest Service Agent
- Round-trip transfer service (once during the stay)
- Fast Track service (per person)
- 3 buggies
- 1 pavilion (during the summer season, 1st row)
- Private butler service (08:00-21:30)
- Zone butler service (21:30-00:00)
- Chef and maid
- Nespresso capsule coffee machine (with hot water option)
- Organic herbal tea selections
- Minibar (replenished free of charge once daily)
- Room fragrance options
- Daily housekeeping service
- Daily towel change
- Bed linen change every other day
- Turndown service
- Iron and ironing board
- Laundry services (available for a fee, from 08:00 to 00:00)



ROOM OVERVIEW

Room Type	Location	Landscape	Maximum number of people	Number of rooms	Bed-room	Living room	Bed	Shower + bathtub	Number of WCs	Room dimensions	Total
Superior Room	Main building	Garden or pool view	2 adults + 2 children (0 - 11.99), 3 adults	1	1	-	1 french bed (180x200) or 2 single beds (120x200)	1 shower	1	39 m ²	175
Superior Sea View Room	Main building, 3rd and 4th floors	Sea view	2 adults + 2 children (0 - 11.99), 3 adults	1	1	-	1 french bed (180x200) or 2 single beds (120x200)	1 shower	1	39 m ²	24
Superior Laguna Room	Main building, ground floor	Pool view (direct access to the communal pool)	2 adults + 2 children (0 - 11.99), 3 adults	1	1	-	1 french bed (180x200) or 2 single beds (120x200)	1 shower	1	39 m ²	51
Suite	Main building	Garden or pool view	2 adults + 2 children (0 - 11.99), 3 adults + 1 child (0 - 11.99)	2	1	1	1 french bed (180x200)	1 shower	2	65 m ²	18
King Suite	Main building	Sea and garden view	4 adults + 2 children (0 - 11.99), 5 adults	3	2	1	1 french bed (180x200) & 2 single beds (120x200)	3 showers & 1 bathtub	3	160 m ²	2
Garden Villa	Garden	Garden view	4 adults + 2 children (0 - 11.99), 5 adults	3	2	1	1 french bed (200x200) & 2 single beds (120x200)	2 showers	2	86 m ²	52
Pool Villa	Garden	View of the communal pool	4 adults + 2 children (0 - 11.99), 5 adults	3	2	1	1 french bed (200x200) & 2 single beds (120x200)	2 showers	2	86 m ²	30
Deluxe Villa	Garden	Garden, golf course and private pool	6 adults + 2 children (0 - 11.99), 7 adults	4	3	1	1 french bed (180x210) & 2 single beds (120x210) & 2 single beds (110x210)	4 showers & 1 bathtub	4	200 m ²	10
Serenity Villa	Garden	Garden, golf course and private pool	6 adults + 2 children (0 - 11.99), 7 adults	4	3	1	1 french bed (200x200) & 2 french beds (160x200) & 2 single beds (100x200)	3 showers & 1 bathtub	4	200 m ²	1
Queen Villa	Garden	Garden, golf course and private pool	8 adults + 2 children (0 - 11.99), 8 adults	5	4	1	1 french bed (200x200) & 2 single beds (90x200) & 2 single beds (120x200) & 2 single beds (100x200)	4 showers	4	250 m ²	1
King Villa	Garden	Garden, golf course and private pool	8 adults + 2 children (0 - 11.99), 8 adults	5	4	1	1 french bed (200x200) & 2 single beds (90x200) & 2 single beds (120x200) & 2 single beds (100x200)	4 showers	5	250 m ²	1
VIP Villa	Garden	Garden, golf course and private pool	8 adults + 2 children (0 - 11.99), 8 adults	5	4	1	1 french bed (200x200) & 4 single beds (140x200) & 1 french bed (180x200)	5 showers & 1 bathtub	6	400 m ²	1
Presidential Villa	Garden	Garden, golf course and private pool	12 adults + 1 child (0 - 11.99), 12 adults	7	6	1	1 french bed (200x200) & 2 single beds (160x200) & 6 single beds (100x200)	6 showers & 3 jaccuzis	9	1400 m ²	1

VIP CONCEPT & PRIVILEGED SERVICES



VIP Concept Privileges: Guests entitled to the VIP Concept may benefit free of charge from the food and beverage services available at our other hotels, excluding A la Carte restaurants serving dinner.

A special VIP Concept is provided to our guests staying in all King Suites, Garden Villas, Pool Villas, Deluxe Villas, Serenity Villas, Queen Villas, King Villas, VIP Villas, Presidential Villas, as well as to Platinum Card holders and Long Stay guests (28 nights or more).

For Guests Wishing to Purchase the VIP Concept: The VIP Concept provides complimentary access to all food and beverage services included in the concept and offered to in-house guests at Gloria Serenity Resort, Gloria Golf Resort, and Gloria Verde Resort, excluding A la Carte restaurants serving dinner. The VIP Concept is valid provided that all guests staying in the same room agree to pay the daily per-person fee. Guests may choose to benefit from this service throughout their entire stay or on a daily basis, according to their preference.

	Gloria Serenity Resort A La Carte Restaurant (except Teppanyaki A La Carte Restaurant)	Gloria Golf Resort & Gloria Verde Resort Main Restaurant, Snack Restaurant, Bar usage	Gloria Golf Resort & Gloria Verde Resort A La Carte Restaurant	24/7 room service (from the menu)	Discounted laundry service
King Suite	✓	✓	✓	✓	%50
Garden Villa	-	✓	-	-	-
Pool Villa	-	✓	-	-	-
Deluxe Villa	✓	✓	✓	✓	%50
Serenity Villa	✓	✓	✓	✓	%50
Queen Villa	✓	✓	✓	✓	%50
King Villa	✓	✓	✓	✓	%50
VIP Villa	✓	✓	✓	✓	%50
Presidential Villa	✓	✓	✓	✓	%50
Platinum Card holders	✓	✓	✓	✓	%15
Long Stay	✓	✓	✓	✓	%50

Gloria Serenity Resort King Suite, Deluxe Villa, Serenity Villa, Queen Villa, King Villa, VIP Villa, Presidential Villa guests, Platinum card holders and Long Stay (28 nights or more) guests are entitled to use all A La Carte restaurants within Gloria Hotels & Resorts free of charge once a week except Teppanyaki Restaurant.



SPECIAL ROOM TYPES PRIVILEGED SERVICES



GLORIA SERENITY RESORT SPECIAL ROOM TYPES PRIVILEGES	GARDEN VILLA	POOL VILLA	KING SUITE	DELUXE VILLA	SERENITY VILLA	QUEEN VILLA	KING VILLA	VIP VILLA	PRESIDENTIAL VILLA
Glorian Guest Service Agent service	✓	✓	✓	✓	✓	✓	✓	✓	✓
Private butler	•	•	•	✓	✓	✓	✓	✓	✓
Private maid	•	•	•	•	✓	✓	✓	✓	✓
Private chef	•	•	•	•	•	•	•	✓	✓
Buggy	•	•	•	✓	✓	✓	✓	✓	✓
Pavilion (summer season)	•	•	✓*	✓*	✓	✓	✓	✓	✓
3 hotel all-inclusive usage	✓	✓	✓	✓	✓	✓	✓	✓	✓
3 hotel A La Carte restaurant usage	•	•	✓**	✓**	✓**	✓**	✓**	✓**	✓**
24-hour room service (from the menu)	•	•	✓	✓	✓	✓	✓	✓	✓
Special welcome set-up	✓	✓	✓	✓	✓	✓	✓	✓	✓
VIP Bvlgari cosmetics	•	•	•	✓	✓	✓	✓	✓	✓
Wireless internet	✓	✓	✓	✓	✓	✓	✓	✓	✓
High speed wireless internet	•	•	✓	✓	✓	✓	✓	✓	✓
Private transfer airport - hotel - airport	•	•	✓	✓	✓	✓	✓	✓	✓
Airport Fast Track service	•	•	✓	✓	✓	✓	✓	✓	✓
Special breakfast & lunch Route 66 Restaurant (summer season)	✓	✓	✓	✓	✓	✓	✓	✓	✓

• Additional charges apply | ✓ Free of charge

* Pavilion row will be given in 2nd and 5th place according to availability.

**Guests staying in King Suite, Deluxe Villa, Serenity Villa, Queen Villa, King Villa, VIP Villa, and Presidential Villa at Gloria Serenity Resort, as well as Platinum Card holders and Long Stay guests (stays of 28 nights or more), are entitled to one complimentary visit per week to all à la carte restaurants within Gloria Hotels & Resorts, excluding the Teppanyaki A La Carte Restaurant.

The Teppanyaki A La Carte Restaurant is available to all guests for an additional charge.



FOOD AND BEVERAGE SERVICES

Restaurant	Concept	Menu	Working hours		Location	Details	Gloria All Inclusive
			Summer season	Winter season			
Tetrasomia Main Restaurant	International	Buffet	Breakfast: 07:00 - 10:30 Lunch 12:30 - 14:30 Dinner 19:00 - 21:30	Breakfast: 07:00 - 10:30 Lunch 12:30 - 14:30 Dinner 18:30 - 21:00	Main building (covered dining area & terrace)	<ul style="list-style-type: none"> • Detoxifying fresh fruit juices for breakfast • Ice cream service at lunch and dinner • "HIPP" products station • Gluten-free, lactose-free, vegan and diet menu options available 	✓
Estela A La Carte Restaurant	International	A La Carte	7 / 24	7 / 24	Main building (covered dining area & terrace)	12:30 - 15:00 sushi service (except wednesday)	✓
River Landing A La Carte Restaurant	Seafood	A La Carte	19:00 - 23:00	Closed	Outdoor (outdoor dining area)	Subject to a fee	
Kül A La Carte Restaurant	Traditional Anatolian cuisine & BBQ	A La Carte	19:00 - 23:00	19:00 - 23:00	Main building (indoor dining area)	Subject to a fee	
Le Jardin Au Printemps A La Carte Restaurant	French cuisine	A La Carte	19:00 - 23:00	19:00 - 23:00	Main building (covered dining area)	Subject to a fee	
Fuego Steak House A La Carte Restaurant	Steak House	A La Carte	19:00 - 23:00	19:00 - 23:00	Main building (covered dining area & terrace)	Subject to a fee	
Chef A La Carte Restaurant	International and local chef cuisine	A La Carte	19:00 - 23:00	19:00 - 23:00	Main building (indoor dining area)	Subject to a fee	
AKA & Teppanyaki A La Carte Restaurant	Japanese cuisine	A La Carte	19:00 - 23:00	19:00 - 23:00	Main building (covered dining area & terrace)	Subject to a fee	
La Trattoria Romana Snack Restaurant	Italian cuisine	A La Carte	12:00 - 16:00	Closed	Outdoor	Ice cream service 10:00 - 17:00	✓
Traces Beach Snack Restaurant	International	A La Carte	12:00 - 18:00	Closed	By the beach	Ice cream service 11:00 - 16:00	✓
Route 66 Snack Restaurant	International	A La Carte	08:00 - 16:00	Closed	Villas area, by the pool, outdoor area	<ul style="list-style-type: none"> • Special breakfast and lunch service for King Suite and Villa guests between • Ice cream service 08:00-16:00 	
Scoop	Handmade ice cream	Showcase	12:00 - 23:00	12:00 - 23:00	Main building		✓
Chocolatier	Handmade chocolate	Showcase	12:00 - 23:00	12:00 - 23:00	Main building		✓
Bon Vivant	Patisserie	Showcase	11:00 - 23:00	10:30 - 23:00	Main building		✓
Pavilion	Private food & beverage service on the beach	A La Carte	09:00 - 18:00	Closed	On the beach, special for pavilion guests	<ul style="list-style-type: none"> • Subject to a fee • Butler service • 09:00 - 18:00 beverage service • 12:00 - 18:00 food service 	
Premium Pier	Private food & beverage service on the pier	A La Carte	09:00 - 20:00	Closed	Beach	<ul style="list-style-type: none"> • Subject to a fee • 09:00 - 20:00 Beverage & Ice Cream Service • 12:00 - 18:00 Food Service 	
Room service	Special menu	A La Carte	24 hours paid *	24 hours paid *	Room service		
What-When-Where Service	Children's menu	A La Carte	24 hours	24 hours		<ul style="list-style-type: none"> • Free of charge for the age range 00 - 03,99 years • Requests must be notified to guest relations in advance 	✓

* Room Service (from the menu): Complimentary 24/7 for guests staying in King Suite, Deluxe Villa, Serenity Villa, Queen Villa, King Villa, VIP Villa, Presidential Villa, Platinum Card holders, and Long Stay guests (28 nights and above). For all other guests, room service is available at an additional charge.

• Evening À La Carte dining: Guests staying in King Suite, Deluxe Villa, Serenity Villa, Queen Villa, King Villa, VIP Villa, Presidential Villa, Platinum Card holders, and Long Stay guests (28 nights and above) are entitled to one complimentary use per week at all A La Carte restaurants within Gloria Hotels & Resorts, excluding the Teppanyaki A La Carte Restaurant.

• For other room types, all evening À La Carte restaurants within Gloria Hotels & Resorts are available at an additional charge per person.

• Route 66 Restaurant (special breakfast and lunch): Complimentary for King Suite guests, all Villa guests, and guests staying under the VIP concept. Available at an

additional charge for all other guests.

• For guests staying under the Gloria All Inclusive concept, food & beverage services received at our other hotels are charged with a 50% discount based on the menu prices (excluding evening A La Carte restaurants).

• À La Carte restaurant service days may be subject to change depending on operational occupancy.

• The Premium Pier is available to all guests for an additional charge. Between 09:00 and 20:00, beverage and ice cream service is provided for all guests renting a Pavilion, Cabana, or Sunbed at the Premium Pier. Guests renting a Pavilion at the Premium Pier are offered food service from the Traces Restaurant menu between 12:00 and 18:00. Guests renting a Cabana or Sunbed may also benefit from food service between 12:00 and 18:00 at the prices listed on the Traces Restaurant menu.

BARS

Bar	Concept	Menu	Working hours		Location	Details	Gloria All Inclusive
			Summer season	Winter season			
Ella Fitzgerald Lobby Bar	Lobby Bar & Lounge	Alcoholic & non-alcoholic & hot drinks & fresh juices	24 hours	24 hours	Main building, ground floor		✓
Charlie Parker Lobby Bar	Lobby Bar & Lounge	Alcoholic & non-alcoholic & hot drinks & fresh juices	24 hours	24 hours	Main building, upper floor		✓
Scarlet	Wine Cellar	World wine varieties	16:00 - 00:00	16:00 - 00:00	Main building, upper floor	Subject to a fee	
Polo Bar	Bar	Alcoholic & non-alcoholic & hot drinks	19:00 - 00:00	19:00 - 00:00	Main building, ground floor		✓
La Trattoria Romana Bar	Bar	Alcoholic & non-alcoholic & hot drinks & fresh juices	10:00 - 22:00	Closed	In the garden	Ice cream service 10:00 - 17:00	✓
Route 66 Bar	Bar	Alcoholic & non-alcoholic & hot drinks & fresh juices	08:00 - 20:00	Closed	Villas area, by the pool, outdoor area	Ice cream service 08:00 - 16:00	✓
Traces Beach Bar	Beach Bar	Alcoholic & non-alcoholic & hot drinks & fresh juices	09:00 - 19:00	Closed	By the beach, open area	Ice cream service 11:00 - 16:00	✓
Dock's Pier Bar	Pier Bar	Alcoholic & non-alcoholic & hot drinks & fresh juices	09:00 - 19:00	Closed	On the pier, open space		✓
Premium Pier Bar	Pier Bar	Alcoholic & non-alcoholic & hot drinks & fresh juices	09:00 - 20:00	Closed	On the pier, open space	<ul style="list-style-type: none"> • Subject to a fee • 09:00 - 20:00 Beverage & Ice Cream Service • 12:00 - 18:00 Food Service 	
Olivium Pool Bar	Pool Bar	Alcoholic & non-alcoholic & hot drinks & fresh juices	09:00 - 20:00	09:00 - 17:00	Outdoor area by the heated pool		✓
Relax Vitamin Bar	Detox Bar	Detox drinks	09:00 - 20:00	09:00 - 20:00	Main building, SPA centre, indoor area		✓
Wurlitzer Bar	Bar	Alcoholic & non-alcoholic & hot drinks & fresh juices	16:00 - 00:00	16:00 - 00:00	Game center, indoor	Common use of GHR	✓
Insomnia Disco Bar	Disco Bar	Alcoholic & non-alcoholic & hot drinks & fresh juices	23:00 - 02:00	23:00 - 02:00 Only on Saturday	Game Center, indoor	Common use of GHR	✓
Arena Bar	Amphitheatre Bar	Alcoholic & soft drinks	Provides service during the activity	Closed	Amphitheatre	Common use of GHR	✓
G-Venture Bar	Concert & Party Bar	Alcoholic & non-alcoholic & hot drinks & fresh juices	Provides service during the activity	Closed	Beach concert area	Common use of GHR	✓
G-Venture Private Lodges	Concert & Party Bar	Alcoholic & non-alcoholic & hot drinks & fresh juices	Provides service during the activity	Closed	Beach concert area	Subject to a fee	
Mini Bar	Room service	Alcoholic & soft drinks, tea, coffee, biscuits, chocolate, crispy apples, confectionery, crisps	During the stay	During the stay	in room	Refilled once a day	✓

POOLS AND BEACH



FEATURES

- Blue flag awarded
- 400 m long and clean sand-pebble beach
- Wood sunbeds
- 2 special sunbeds for guests with disabilities
- Opening and closing dates and times of beaches and pools may vary according to weather conditions

FACILITIES

- Beach restaurant
- Beach bar
- Pier
- Special pier (surcharge)
- Beach gym
- Beach pavillions (surcharge)

BEACH ACTIVITIES AND SERVICES

- Beach volleyball
- Children's playground
- Trampoline
- QR menu service (09:00 – 19:00)
- Beach towel service
- Security
- Lifeguard

PAID SERVICES

- Special pier
- Water sports activities (08:00 - 20:00)
- Daily pavilion use (09:00 - 18:00)
- SPA treatment area
- Shopping area

PAVILION DETAILS:

- Operates during the summer season
- Operating hours: 09:00 – 18:00
- Shared butler service
- Special service for all pavilion guests
- 12:00 - 18:00 snack from the menu
- Beverage menu with hotel concept
- Mini bar
- Capsule coffee machine (upon request)
- Towels
- Waiter call button

GLORIA SERENITY RESORT POOLS	STATE OF USE	OUTDOOR	INDOOR	SEA WATER	SWEET WATER	DEPTH	AREA	SUMMER SEASON	WINTER SEASON	HEATED
Main Pool 1 (in front of the main building)	Communal area	✓		✓		140 cm-200 cm	3621 m ²	08:00-20:00	Closed	
Main Pool 2 (Pool Villa area)	Communal area	✓			✓	140 cm-200 cm	4070 m ²	08:00-20:00	Closed	
Child Pool	Communal area	✓			✓	48 cm	65 m ²	08:00-20:00	Closed	
Olivium Pool	Communal area	✓			✓	140 cm	500 m ²	08:00-20:00	08:00-20:00	✓
Olivium Children Pool	Communal area	✓			✓	50 cm	25 m ²	08:00-20:00	08:00-20:00	✓
Indoor pool (in the SPA centre)	Communal area		✓		✓	140 cm	273 m ²	08:00-20:00	08:00-20:00	✓
Indoor Children's Pool (in the SPA centre)	Communal area		✓		✓	44 cm	11 m ²	08:00-20:00	08:00-20:00	✓
Deluxe Villa Pool	Private	✓		✓*	✓	140 cm	52 m ²			✓
Serenity Villa Pool	Private	✓		✓*	✓	140 cm	94 m ²			✓
Queen Villa Pool	Private	✓		✓*	✓	140 cm	100 m ²			✓
King Villa Pool	Private	✓		✓*	✓	140 cm	100 m ²			✓
VIP Villa Pool	Private	✓		✓*	✓	140 cm	92 m ²			✓
Presidential Villa Pool	Private	✓		✓*	✓	140 cm	133 m ²			✓

- The pool water option must be requested from Guest Relations at least one day in advance.
- Children under the age of 12 must use the pool under parental supervision.
- Smoking is prohibited around the children's pool area.
- Sunbeds and towel service around the pool and on the beach are provided free of charge.
- Heating schedules for heated pools may vary depending on weather conditions.



SERENITY SPA

An ambiance with the unmistakable mark of luxury.
A place of peace and tranquillity.



DETAILS

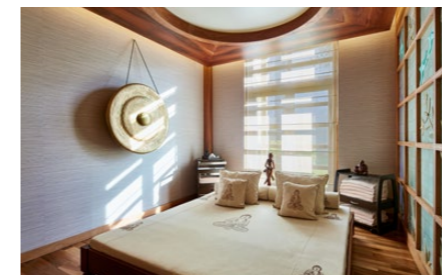
Covers an area of 3,500 m².
Located on the ground floor of the main building.
Open daily between 09:00 and 20:00.
Between 13:00 and 15:00, guests under the age of 12 may use the Turkish bath, sauna, and relaxation areas only when accompanied by a parent.
For the safety and well-being of our young guests aged 12-16, use of the Turkish bath, sauna, and relaxation areas is permitted between 13:00 and 15:00.

SERVICES

Indoor pool
Indoor children's pool
Rest area
Relax Vitamin Bar
15 therapy rooms
1 private SPA Suite
Skin, face, and body treatments (world-famous brands such as Thermes Marins, Juliette Armand and CACI Ultra...)
Massages and treatments
1 private bath
Hairdresser services
Manicure - pedicure
65° C & 90° C sauna
2 steam rooms
1 Turkish bath
Changing rooms with lockers
SPA Pavilion on the beach (closed in winter)

PAID SERVICES

All massage services
Special hammam services
All skin, face, and body care services
Hairdresser services
Manicure - pedicure
SPA cosmetics
SPA Pavilion



MEETINGS, ORGANISATIONS AND WEDDINGS

Meeting rooms and equipment are subject to additional charges.
Please contact our MICE department for special service and price details for meeting groups.

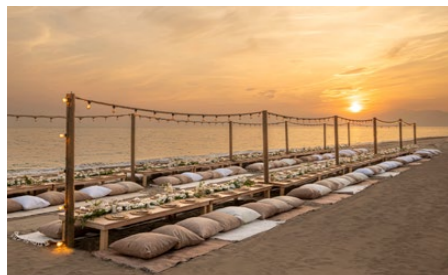


MEETING ROOM	LENGTH	WIDTH	AREA	HEIGHT	BANKET	U TABLE	THEATRE	CLASS
Faces I-II-III	24 m	10,5 m	251 m ²	3,8 m	70 Person	-	160 Person	80 Person
Faces I (daylight)	6,5 m	10,5 m	68 m ²	3,8 m	30 Person	14 Person	45 Person	27 Person
Faces II (daylight)	11 m	10,5 m	115 m ²	3,8 m	48 Person	24 Person	65 Person	30 Person
Faces III (daylight)	6,5 m	10,5 m	68 m ²	3,8 m	30 Person	20 Person	45 Person	24 Person

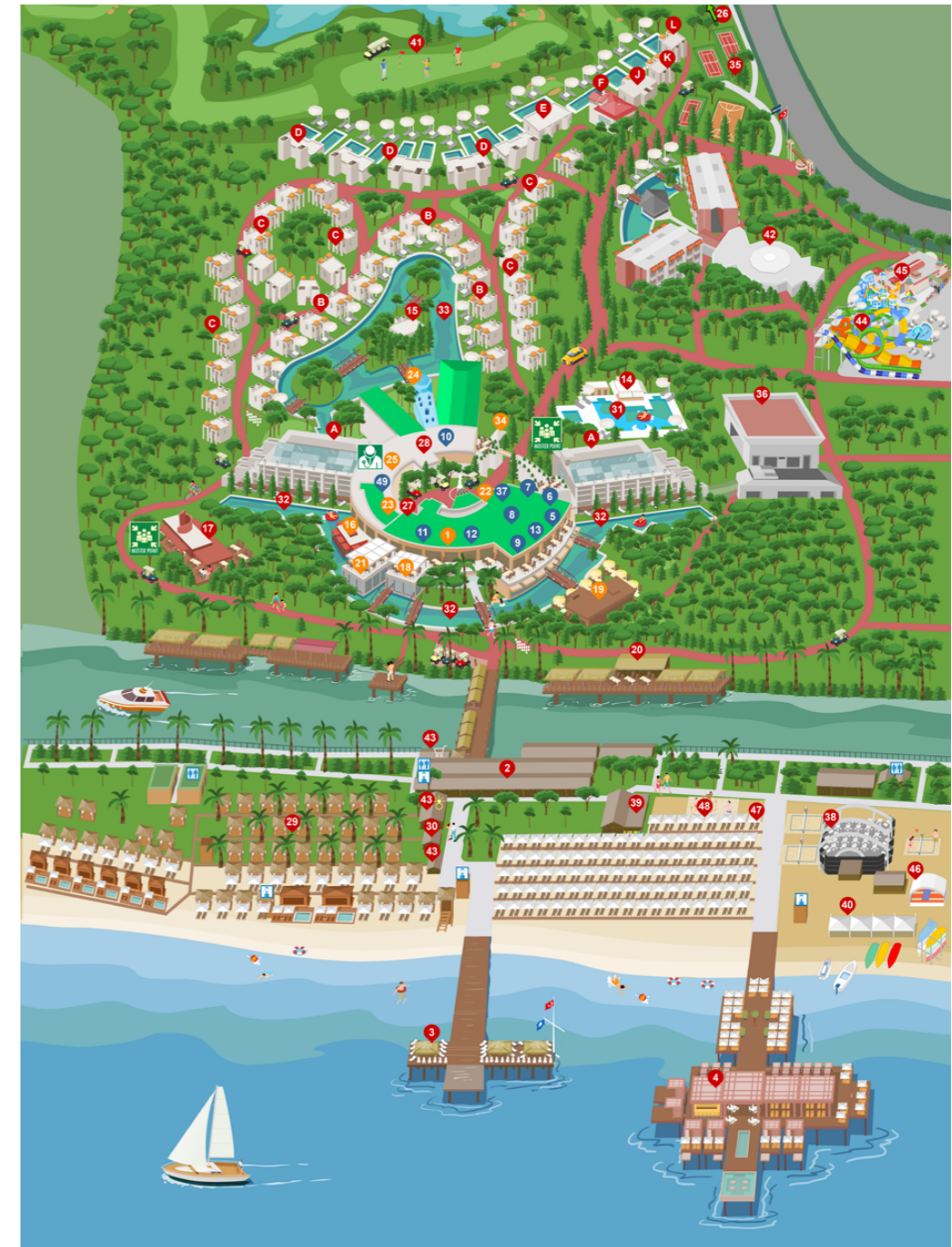
As Gloria Hotels & Resorts, we would like to share your happiness as you set sail for the new beginning in your life.

Gloria Hotels & Resorts has an experienced cuisine with all kinds of flavours and an efficient team to make your wedding unforgettable. All you need to do is say 'YES'. Gloria Hotels & Resorts will take care of all the details...

At Gloria Hotels & Resorts we want to thank you for the trust you have put in us - and we promise to support you in all your special celebrations.



GLORIA SERENITY RESORT - MAP



- | | | | |
|---|--|--|---|
| <p>ROOMS</p> <ul style="list-style-type: none"> A. MAIN BUILDING (1001-2450) B. POOL VILLAS (3201-3230) C. GARDEN VILLAS (3105-3420) D. DELUXE VILLAS E. VIP VILLA F. PRESIDENTIAL VILLA J. SERENITY VILLA K. QUEEN VILLA L. KING VILLA | <p>FOOD & BEVERAGE</p> <ul style="list-style-type: none"> 1. LOBBY BAR & COFFEE HOUSE (TERRACE) 2. TRACES BEACH SNACK 3. DOCK'S PIER BAR 4. PREMIUM PIER BAR 5. FUEGO STEAK HOUSE A LA CARTE RESTAURANT 6. CHEF A LA CARTE RESTAURANT 7. SCOOP ICE CREAM 8. CHOCOLATER 9. BON VIVANT PATISSERIE 10. KÜL A LA CARTE RESTAURANT 11. ESTELA A LA CARTE RESTAURANT 7/24 12. CHARLIE PARKER LOBBY BAR 13. SCARLET WINE CELLAR 14. OLIVUM POOL BAR 15. ROUTE 66 SNACK RESTAURANT 16. AKA A LA CARTE JAPANESE CUISINE & TEPPANYAKI 17. LA TRATTORIA ROMANA SNACK 18. LE JARDIN AU PRINTemps A LA CARTE 19. TETRASOMIA MAIN RESTAURANT & TERRACE 20. RIVER LANDING A LA CARTE 21. POLO BAR | <p>OUTLETS & FACILITIES & LOBBY</p> <ul style="list-style-type: none"> 22. GUEST RELATIONS & CONCIERGE 23. SHOPPING AREA 24. SERENITY SPA & INDOOR POOL 25. DOCTOR OFFICE 26. GLORIA MINI FARM 27. RECEPTION 28. FACES MEETING ROOMS I-II-III 29. BEACH PAVILIONS 30. TOWEL DESK 31. OLIVUM POOL & OLIVUM KIDS POOL (HEATING POOLS) 32. SEAWATER POOL 33. FRESHWATER POOL | <p>ACTIVITIES</p> <ul style="list-style-type: none"> 34. FT GLORIA 35. TENNIS COURTS & BASKETBALL FIELD 36. AMPHITHEATRE & ENTERTAINMENT CENTER. INSOMNIA NIGHT CLUB 37. GOGI MINI 38. G-VENTURE (CONCERT & PARTY HALL) 39. WELLNESS AREA & ART STUDIO 40. WATER SPORTS 41. GOLF COURSE 42. GOGI FUN JUNGLE (GLORIA GOLF RESORT) 43. OUTLETS & FACILITIES 44. AQUAPARK (GLORIA GOLF RESORT) 45. GOGI KIDS CLUB (GLORIA GOLF RESORT) 46. TRAMPOLINE 47. BEACH VOLLEY 48. BEACH GYM 49. LOCKER ROOMS |
|---|--|--|---|



GLORIA GOLF RESORT

Beyond Expectations

The private beach, warm sand and endless sea flowers in a glowing universe of colours, welcome to a magnificent, elegant world!



GENERAL INFORMATION

Gloria Golf Resort opening date: 1997
 Category: 5* Hotel
 Company: Özaltın Holding
 Season: Full year
 Gloria Hotels & Resorts total area: 2.400.000 m²
 Gloria Golf Resort area: 190.000 m²
 Address: Belek Mah. Turizm Cad. No:74 Serik – Antalya / Türkiye
 Telephone: +90 242 710 06 00
 E-mail: info@gloria.com.tr
 Website: www.gloria.com.tr
 WI-FI: Rooms and public areas (free of charge)
 High-speed internet in rooms and public areas (surcharge)
 Credit cards: Visa, Mastercard, Amex
 Languages Spoken: Turkish, English, Russian, German
 To download current pictures, videos, and factsheets: stock.gloria.com.tr

ACCOMMODATION

The hotel has a main building with 4 floors and 2 wings, and a total of 5 lifts serving each floor. In the garden, there are Family Suites consisting of 3 floors and 2 wings, Standard Rooms, Junior Suites and Villas consisting of 2 floors and 8 wings.

ACCOMMODATION POLICY

Pets not allowed
 Hotel check-in time: 06:00
 Hotel check-out time: 19:00
 Room check-in time: 15:00
 Room check-out time: 12:00
 Early check-in and late check-out policy: Early check-in or late check-out is subject to availability. Depending on availability, early check-in before 06:00 or late check-out after 19:00, 100% of the daily room rate is applied. In other time zones, early check-in and late check-out prices determined by the hotel are applied.
 Smoking: The use of tobacco products and electronic cigarettes is not permitted indoors.
 Age limit policy: Guests under 18 years of age are not accommodated without a parent.
 Visitor policy: Hotel guests may receive visitors at the hotel between 09:00 and 23:00, subject to an additional fee. Visitors are required to present their passport or identification card at the entrance. Visitors are not permitted to enter guest rooms. Gloria Hotels & Resorts reserves the right to refuse this service at its sole discretion
 Transfer between hotels: Guests are provided with free shuttle service between Gloria Hotels.

LOCATION & TRANSPORT

Antalya Airport: 40 km
 Gazipasa Airport: 148 km
 Antalya city centre: 50 km
 Nearest settlement centre: 7 km (Belek)
 Beach: Private sand/gravel beach and 1 pier
 Gloria Golf Club: 1,5 km

ROOM DETAILS

Total Rooms: 515
 Standard Rooms: 295
 Suites: 174
 Villas: 46
 Bed Capacity: 1276
 Floor Plan:
 62 Garden Standard Rooms + 2 Disabled Rooms
 227 Main Building Rooms + 4 Disabled Rooms
 48 Garden Junior Suites
 31 Main Building Junior Suites
 22 Suites
 60 Family Suites
 12 Family Suites Pool Access
 1 King Suite
 24 Gloria Villas
 18 Executive Villas
 4 Owner Villas

GARDEN STANDARD ROOM

Garden | 24 m² | Garden view
Maximum number of Person: 2 adults + 2 children (0 - 11.99) | 3 adults



ROOM FEATURES

- 1 room
- Parquet floor
- Sofa or armchair
- Coffee corner
- Coffee table
- Wardrobe
- Curtains
- Writing desk
- Central air conditioning
- Full-length mirror
- Suitcase rack
- Balcony or terrace
- Chairs and coffee table set on the balcony or terrace
- Laundry drying rack on the balcony or terrace

BED

- 1 french bed (160x200) or 2 single beds (100x200)
- Special manufactured mattress
- Pillow menu
- Cot (available on request, 70x110)
- Rollaway ekstra bed (available on request, 100x200)

BATHROOM

- Shower cabin and WC
- Atelier Rebul Signature Collection bath and shower products
- Baby bath products (optional)
- Children's bathrobe (optional, 2 - 11.99)
- Bathrobe
- Slippers
- Illuminated make-up mirror
- Hair dryer
- Telephone
- Scales

TECHNOLOGY

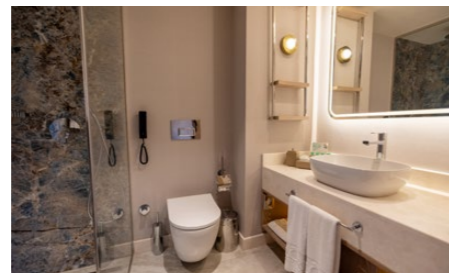
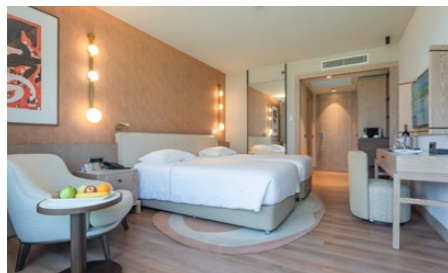
- LED TV - IP TV
- Telephone
- Safe box
- Wireless internet access

SERVICES & FACILITIES

- Glorian Guest Assistant (Gloria mobile application)
- Schiller capsule coffee machine
- Schiller herbal tea selection
- Electric kettle
- Minibar (replenished once daily free of charge)
- Daily housekeeping
- Towel change every other day
- Linen change every other day
- Iron and ironing board (upon request)
- Laundry services (available for an additional charge, 08:00 - 00:00)



*There are 2 Garden Standard rooms that are tailored to the needs of our disabled guests.



MAIN BUILDING STANDARD ROOM

Main Building | 24 m² | Garden or pool view
Maximum number of Person: 2 adults + 2 children (0 - 11.99) | 3 adults



ROOM FEATURES

- 1 room
- Parquet floor
- Sofa or armchair
- Coffee corner
- Coffee table
- Wardrobe
- Curtains
- Writing desk
- Central air conditioning
- Full-length mirror
- Suitcase rack
- Balcony or terrace
- Chairs and coffee table set on the balcony or terrace
- Laundry drying rack on the balcony or terrace

BED

- 1 french bed (160x200) or 2 single beds (100x200)
- Special manufactured mattress
- Pillow menu
- Baby Cot (available on request, 70x110)
- Rollaway ekstra bed (available on request, 100x200)

BATHROOM

- Shower cabin and WC
- Atelier Rebul Signature Collection bath and shower products
- Baby bath products (optional)
- Children's bathrobe (optional, 2 - 11.99)
- Bathrobe
- Slippers
- Illuminated make-up mirror
- Hair dryer
- Telephone
- Scales

TECHNOLOGY

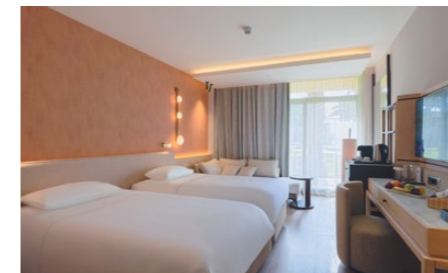
- LED TV - IP TV
- Telephone
- Safe box
- Wireless internet access

SERVICES & FACILITIES

- Glorian Guest Assistant (Gloria mobile application)
- Schiller capsule coffee machine
- Schiller herbal tea selection
- Electric kettle
- Minibar (replenished once daily free of charge)
- Daily housekeeping
- Towel change every other day
- Linen change every other day
- Iron and ironing board (upon request)
- Laundry services (available for an additional charge, 08:00 - 00:00)



*There are 4 Main Building Standard rooms that are tailored to the needs of our disabled guests.



JUNIOR SUITE

Main building & Garden | 35 m² | Garden or pool view
Maximum number of Person: 2 adults + 2 children (0 - 11.99) | 3 adults



ROOM FEATURES

- 1 room
- Parquet floor
- Seating area area, pouffe and coffee table
- Writing desk
- Coffee corner
- Wardrobe
- Curtains
- Central air conditioning
- Full-length mirror
- Suitcase rack
- Balcony or terrace
- Chairs and coffee table set on the balcony or terrace
- Laundry drying rack on the balcony or terrace

BED

- 1 french bed (180x200)
- Special manufactured mattress
- Pillow menu
- Baby Cot (available on request, 70x110)
- Rollaway ekstra bed (available on request, 100x200)

BATHROOM

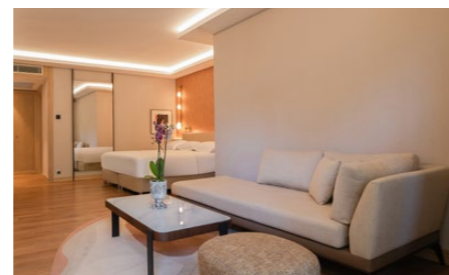
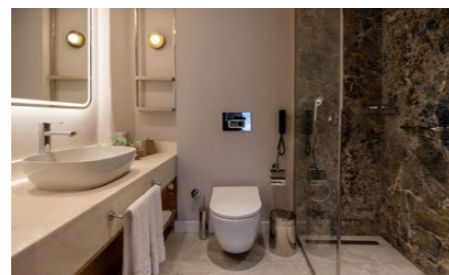
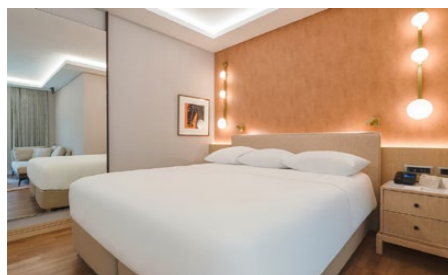
- Shower cabin and WC
- Atelier Rebul Signature Collection bath and shower products
- Baby bath products (optional)
- Children's bathrobe (optional, 2 - 11.99)
- Bathrobe
- Slippers
- Illuminated make-up mirror
- Hair dryer
- Telephone
- Scales

TECHNOLOGY

- LED TV - IP TV
- Telephone
- Safe deposit box
- Wireless internet access

SERVICES & FACILITIES

- Glorian Guest Assistant (Gloria mobile application)
- Schiller capsule coffee machine
- Schiller herbal tea selection
- Electric kettle
- Minibar (replenished once daily free of charge)
- Daily housekeeping
- Towel change every other day
- Linen change every other day
- Iron and ironing board (upon request)
- Laundry services (available for an additional charge, 08:00 - 00:00)



SUITE

Main building | 42 m² | Garden view
Maximum number of Person: 2 adults + 2 children (0 - 11.99) | 3 adults + 1 child (0 - 11.99)



ROOM FEATURES

- 2 rooms: 1 bedroom & 1 living room
- Parquet floor
- Seating area, single armchair, pouf and coffee table
- Writing desk
- Wardrobe
- Curtains
- Central air conditioning
- Full-length mirror
- Suitcase rack
- Balcony or terrace
- Chairs and coffee table set on the balcony or terrace
- Laundry drying rack on the balcony or terrace

BED

- 1 french bed (180x200)
- Special manufactured mattress
- Pillow menu
- Baby Cot (available on request, 70x110)
- Rollaway ekstra bed (available on request, 100x200)

BATHROOM

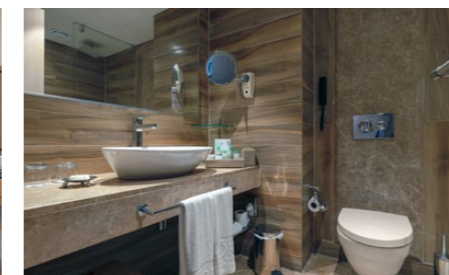
- Shower cabin and WC
- Atelier Rebul Signature Collection bath and shower products
- Baby bath products (optional)
- Children's bathrobe (optional, 2 - 11.99)
- Bathrobe
- Slippers
- Illuminated make-up mirror
- Hair dryer
- Telephone
- Scales

TECHNOLOGY

- 2 LED TV - IP TV
- Telephone
- Safe box
- Wireless internet access

SERVICES & FACILITIES

- Glorian Guest Assistant (Gloria mobile application)
- Schiller capsule coffee machine
- Schiller herbal tea selection
- Electric kettle
- Minibar (replenished once daily free of charge)
- Daily housekeeping
- Towel change every other day
- Linen change every other day
- Iron and ironing board (upon request)
- Laundry services (available for an additional charge, 08:00 - 00:00)



FAMILY SUITE

Garden building | 60 m² | Garden or pool view
Maximum number of Person: 4 adults + 1 child (0 - 11.99) | 4 adults



ROOM FEATURES

- 2 rooms: 2 bedrooms
- Parquet floor
- 1st bedroom: 1 french bed, seating area, single armchair and coffee table, writing desk
- 2nd bedroom: 2 single beds and a writing desk
- Wardrobe
- Curtains
- Central air conditioning
- Full-length mirror
- Suitcase rack
- Balcony or terrace
- Chairs and coffee table set on the balcony or terrace
- Laundry drying rack on the balcony or terrace
- Shared pool

BED

- 1st bedroom: 1 french bed (180x200)
- 2nd bedroom: 2 single beds (100x200)
- Special manufactured mattress
- Pillow menu
- Sofa (85x190)
- Baby Cot (available on request, 70x110)
- Rollaway ekstra bed (available on request, 100x200)

BATHROOM

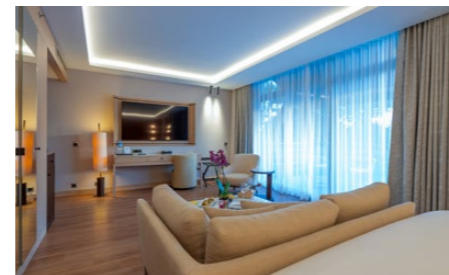
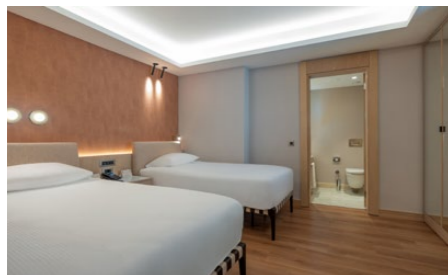
- 2 separate bathrooms and WC
- 1st bathroom: shower cabin and WC
- 2nd bathroom: shower cabin and WC
- Atelier Rebul Signature Collection bath and shower products
- Baby bath products (optional)
- Children's bathrobe (optional, 2 - 11.99)
- Bathrobe
- Slippers
- Illuminated make-up mirror
- Hair dryer
- Telephone
- Scales

TECHNOLOGY

- 2 LED TV - IP TV
- Telephone
- Safe box
- Wireless internet access

SERVICES & FACILITIES

- Glorian Guest Assistant (Gloria mobile application)
- Schiller capsule coffee machine
- Schiller herbal tea selection
- Electric kettle
- Minibar (replenished once daily free of charge)
- Daily housekeeping
- Towel change every other day
- Linen change every other day
- Iron and ironing board (upon request)
- Laundry services (available for an additional charge, 08:00 - 00:00)



FAMILY SUITE POOL ACCESS

Garden building | 60 m² | Ground floor, pool side
Maximum number of Person: 4 adults + 1 child (0 - 11.99) | 4 adults



ROOM FEATURES

- 2 rooms: 2 bedrooms
- Parquet floor
- 1st bedroom: 1 french bed, seating area, single armchair and coffee table, writing desk
- 2nd bedroom: 2 single beds and a writing desk
- Wardrobe
- Curtains
- Central air conditioning
- Full-length mirror
- Suitcase rack
- Poolside terrace
- Chairs and table on the terrace
- Laundry drying rack on the terrace
- Shared pool

BED

- 1st bedroom: 1 french bed (180x200)
- 2nd bedroom: 2 single beds (100x200)
- Special manufactured mattress
- Pillow menu
- Sofa (85x190)
- Baby Cot (available on request, 70x110)
- Rollaway ekstra bed (available on request, 100x200)

BATHROOM

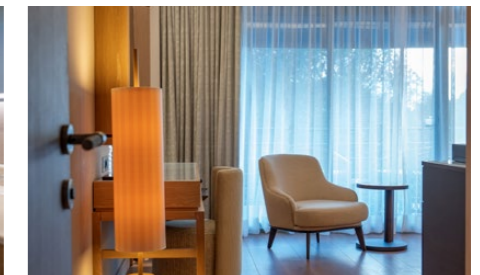
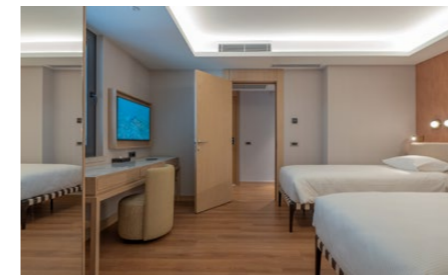
- 2 separate bathrooms and WC
- 1st bathroom: shower cabin and WC
- 2nd bathroom: shower cabin and WC
- Atelier Rebul Signature Collection bath and shower products
- Baby bath products (optional)
- Children's bathrobe (optional, 2 - 11.99)
- Bathrobe
- Slippers
- Illuminated make-up mirror
- Hair dryer
- Telephone
- Scales

TECHNOLOGY

- 2 LED TV - IP TV
- Telephone
- Safe box
- Wireless internet access

SERVICES & FACILITIES

- Glorian Guest Assistant (Gloria mobile application)
- Schiller capsule coffee machine
- Schiller herbal tea selection
- Electric kettle
- Minibar (replenished once daily free of charge)
- Daily housekeeping
- Towel change every other day
- Linen change every other day
- Iron and ironing board (upon request)
- Laundry services (available for an additional charge, 08:00 - 00:00)



KING SUITE

Main Building | 150 m² | Sea side garden view
Maximum number of Person: 4 adults + 2 children (0 - 11.99) | 5 adults



ROOM FEATURES

- Three-room layout: 2 bedrooms & 1 living room
- Room lighting controlled via smart panel
- Sheer and blackout curtains controlled via smart panel
- Parquet flooring
- Living room: seating area with 2 sofas, 1 armchair, 1 single armchair, pouf and coffee tables; dining table and chairs
- 1st bedroom: 1 double bed; seating area with sofa, single armchair and coffee table; work desk
- 2nd bedroom: 2 single beds; single armchair, coffee table and work desk
- Coffee corner
- Wardrobe
- Central air conditioning
- Full-length mirror
- Suitcase rack
- 2 balconies
- Set of chairs and coffee table on the balcony
- Laundry drying rack on the balcony

BED

- 1st bedroom: 1 french bed (200x200)
- 2nd bedroom: 2 single beds (100x200)
- Special manufactured mattress
- Pillow menu
- Baby Cot (available on request, 70x110)
- Rollaway ekstra bed (available on request, 100x200)

BATHROOM

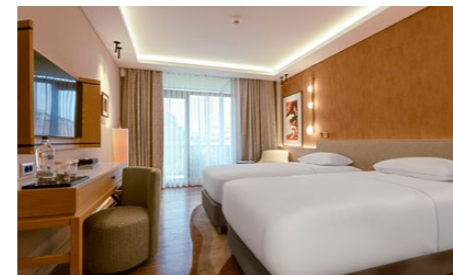
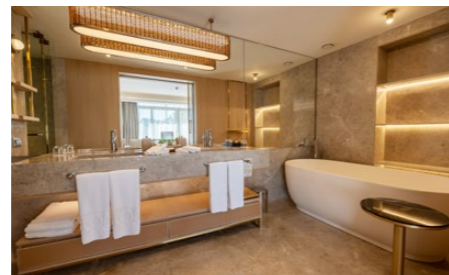
- 2 separate bathrooms and 3 WCs
- 1st bathroom: double washbasin, shower cabin, bathtub, and WC
- 2nd bathroom: shower cabin and WC
- Guest washbasin and WC
- VIP Bvlgari bath and shower products
- Baby bath products (optional)
- Children's bathrobe (optional, 2 - 11.99)
- Bathrobe
- Slippers
- Hair dryer
- Telephone
- Scales

TECHNOLOGY

- Smart home control system
- 3 LED TV - IP TV
- Telephone
- Safe box
- High-speed wireless internet access
- USB ve Type-C Priz

SERVICES & FACILITIES

- Glorian Guest Assistant (Gloria mobile application)
- Round-trip transfer service (once per stay)
- Fast Track service (per person)
- One pavilion (during the summer season)
- Schiller capsule coffee machine
- Schiller herbal tea selection
- Electric kettle
- Minibar (replenished once daily free of charge)
- Room fragrance options
- Daily housekeeping
- Towel change every other day
- Linen change every other day
- Turndown service
- Iron and ironing board
- Laundry services (available for an additional charge, 08:00 - 00:00)



GLORIA VILLA

Garden | Two-storey building (lower or upper floor) | 70 m² | Garden view
Maximum number of Person: 4 adults + 2 children (0 - 11.99) | 5 adults



ROOM FEATURES

- 3 rooms: 2 bedrooms & 1 living room
- Parquet floor
- Living room: tea and coffee corner, dining table and chairs, corner set with coffee table
- 1st bedroom: 1 french bed and writing desk
- 2nd bedroom: 2 single beds
- Wardrobe
- Curtains
- Central air conditioning
- Full-length mirror
- Suitcase rack
- Balcony or terrace
- Table and chair set on the balcony or terrace
- Laundry drying rack on the balcony or terrace
- Sunbed on the balcony or terrace

BED

- 1st bedroom: 1 french bed (180x200)
- 2nd bedroom: 2 single beds (100x200)
- Special manufactured mattress
- Pillow menu
- Sofa (90x200 & 90x220)
- Baby Cot (available on request, 70x110)
- Rollaway ekstra bed (available on request, 100x200)

BATHROOM

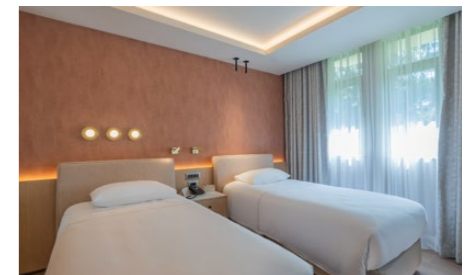
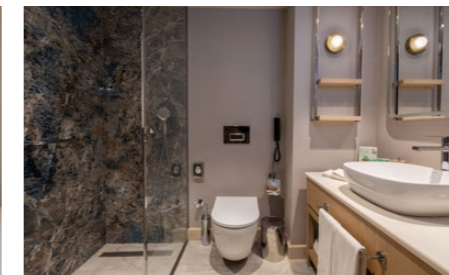
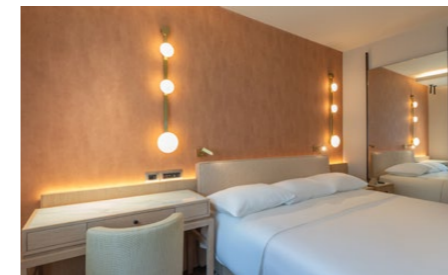
- 2 separate bathrooms and 2 WCs
- 1st bathroom: shower cabin and WC
- 2nd bathroom: shower cabin and WC
- Atelier Rebul Signature Collection bath and shower products
- Baby bath products (optional)
- Children's bathrobe (optional, 2 - 11.99)
- Bathrobe
- Slippers
- Illuminated make-up mirror
- Hair dryer
- Telephone
- Scales

TECHNOLOGY

- 1 mirror TV and 2 LED TVs - IP TV
- Telephone
- Safe box
- Wireless internet access

SERVICES & FACILITIES

- Glorian Guest Assistant (Gloria mobile application)
- Schiller capsule coffee machine
- Schiller herbal tea selection
- Electric kettle
- Minibar (replenished once daily free of charge)
- Room fragrance options
- Daily housekeeping
- Towel change every other day
- Linen change every other day
- Turndown service
- Iron and ironing board
- Laundry services (available for an additional charge, 08:00 - 00:00)



EXECUTIVE VILLA

Garden | Single Storey | 80 m² | Garden view
Maximum number of Person: 4 adults + 2 children (0 - 11.99) | 5 adults



ROOM FEATURES

- 3 rooms: 2 bedrooms & 1 living room
- Parquet floor
- Living room: tea and coffee corner, dining table and chairs, corner set with pouf and coffee table
- 1st bedroom: 1 french bed and writing desk
- 2nd bedroom: 2 single beds and a writing desk
- Wardrobe
- Curtains
- Central air conditioning
- Full-length mirror
- Suitcase rack
- Private terrace
- Table and chair set on the terrace
- Sunbeds on the terrace
- Laundry drying rack on the terrace

BED

- 1st bedroom: 1 french bed (180x200)
- 2nd bedroom: 2 single beds (100x200)
- Special manufactured bed
- Pillow menu
- Sofa (90x220 & 110x200)
- Baby Cot (available on request, 70x110)
- Rollaway ekstra bed (available on request, 100x200)

BATHROOM

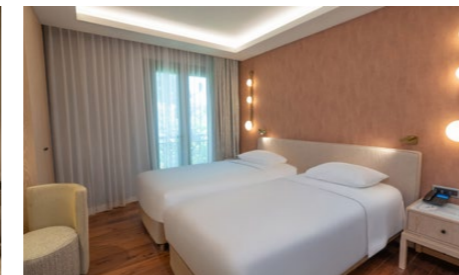
- 2 separate bathrooms and 2 WCs
- 1st bathroom: shower cabin and WC
- 2nd bathroom: shower cabin and WC
- Atelier Rebul Signature Collection bath and shower products
- Baby bath products (optional)
- Children's bathrobe (optional, 2 - 11.99)
- Bathrobe
- Slippers
- Illuminated make-up mirror
- Hair dryer
- Telephone
- Scales

TECHNOLOGY

- 1 mirror TV and 2 LED TVs - IP TV
- Telephone
- Safe box
- Wireless internet access

SERVICES & FACILITIES

- Glorian Guest Assistant (Gloria mobile application)
- Schiller capsule coffee machine
- Schiller herbal tea selection
- Electric kettle
- Minibar (replenished once daily free of charge)
- Room fragrance options
- Daily housekeeping
- Towel change every other day
- Linen change every other day
- Turndown service
- Iron and ironing board
- Laundry services (available for an additional charge, 08:00 - 00:00)



OWNER VILLA

Garden | Single storey | 190 m² | Garden, river and private pool views
Maximum number of person: 6 adults + 2 children (0 - 11.99) | 7 adults



ROOM FEATURES

- 4 rooms: 3 bedrooms & 1 living room
- Parquet flooring (marble flooring in the entrance hall and kitchen)
- Fully equipped private kitchen: countertop, sink, stovetop, oven, extractor hood, refrigerator, dishwasher, table and 2 chairs
- Living room: dining table and chair set; seating area with sofa, 2 single armchairs and coffee table
- 1st bedroom: 1 double bed, lounge chair, single armchair, walk-in dressing area, vanity table with chair and mirror
- 2nd bedroom: 1 double bed and work desk
- 3rd bedroom: 2 single beds, single armchair and work desk
- Storage room: washing machine, cordless upright vacuum cleaner
- Wardrobe
- Full-length mirror
- Suitcase rack
- Private terrace
- Central air conditioning
- Table and chair set on the terrace
- Laundry drying rack on the terrace
- Private outdoor pool (with heating option, 140 cm depth, 78 m²)
- Hammock and sunbeds by the pool

BED

- 1st bedroom: 1 french bed (200x200)
- 2nd bedroom: 1 french bed (180x200)
- 3rd bedroom: 2 single beds (100x200)
- Special manufactured bed
- Pillow menu
- Sofa (75x275)
- Baby Cot (available on request, 70x110)
- Rollaway extra bed (available on request, 100x200)

BATHROOM

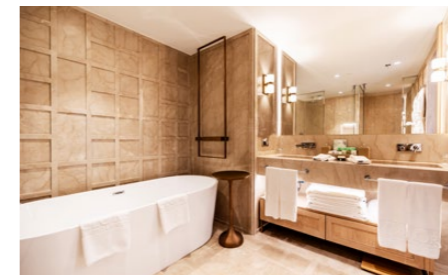
- 3 separate bathrooms and 4 WCs
- 1st bathroom: shower cabin, bathtub, double washbasin, and WC
- 2nd bathroom: shower cabin, double washbasin, and WC
- 3rd bathroom: shower cabin and WC
- Guest washbasin and WC
- VIP Bvlgari bath and shower products
- Baby bath products (optional)
- Children's bathrobe (optional, 2 - 11.99)
- Bathrobe
- Slippers
- Hair dryer
- Telephone
- Scales

TECHNOLOGY

- 3 mirror TVs and 1 LED TV - IP TV
- Telephone
- Safe box
- High-speed wireless internet access

SERVICES & FACILITIES

- Glorian Guest Assistant (Gloria mobile application)
- Round-trip transfer service (once per stay)
- Fast Track service (per person)
- 1 pavilion (during the summer season)
- Schiller capsule coffee machine
- Schiller herbal tea selection
- Electric kettle
- Minibar (replenished once daily free of charge)
- Room fragrance options
- Daily housekeeping
- Towel change every other day
- Linen change every other day
- Turndown service
- Iron and ironing board
- Laundry services (available for an additional charge, 08:00 - 00:00)



ROOM OVERVIEW



Room Type	Location	Landscape	Maximum number of people	Number of rooms	Bed-room	Living room	Bed	Shower+ bathtub	WC	Room dimensions	Total
Garden Standard Room	Garden building	Garden view	2 adults + 2 children (0 - 11.99), 3 adults	1	1	-	1 french bed (160 x 200) or 2 single beds (100 x 200)	1 shower	1	24 m ²	64
Main Building Standard Room	Main building	Garden or pool view	2 adults + 2 children (0 - 11.99), 3 adults	1	1	-	1 french bed (160 x 200) or 2 single beds (100 x 200)	1 shower	1	24 m ²	231
Junior Suite	Main building & garden	Garden or pool view	2 adults + 2 children (0 - 11.99), 3 adults	1	1	-	1 french bed (180 x 200)	1 shower	1	35 m ²	79
Suite	Main building	Garden view	2 adults + 2 children (0 - 11.99), 3 adults + 1 child (0 - 11.99)	2	1	1	1 french bed (180 x 200)	1 shower	1	42 m ²	22
Family Suite	Garden building	Garden or pool view	4 adults + 1 child (0 - 11.99)	2	2	-	1 french bed (180 x 200) & 2 single beds (100 x 200)	2 showers	2	60 m ²	60
Family Suite Pool Access	Garden building	Garden or pool view	4 adults + 1 child (0 - 11.99)	2	2	-	1 french bed (180 x 200) & 2 single beds (100 x 200)	2 showers	2	60 m ²	12
King Suite	Main building	Seaside, garden view	4 adults + 2 children (0 - 11.99), 5 adults	3	2	1	1 french bed (200 x 200) & 2 single beds (100 x 200)	2 showers & 1 bathtub	3	150 m ²	1
Gloria Villa	Garden building (ground floor or 1st floor)	Garden view	4 adults + 2 children (0 - 11.99), 5 adults	3	2	1	1 french bed (180 x 200) & 2 single beds (100 x 200)	2 showers	2	70 m ²	24
Executive Villa	Garden Building	Garden view	4 adults + 2 children (0 - 11.99), 5 adults	3	2	1	1 french bed (180 x 200) & 2 single beds (100 x 200)	2 showers	2	80 m ²	18
Owner Villa	Garden Building	Garden, river and private pool view	6 adults + 2 children (0 - 11.99), 7 adults	4	3	1	1 french bed (200 x 200) & 1 french bed (180 x 200) & 2 single beds (100 x 200)	3 showers & 1 bathtub	4	190 m ²	4



VIP CONCEPT & PRIVILEGED SERVICES



VIP Concept Privileges: Guests entitled to the VIP Concept may benefit free of charge from the food and beverage services available at our other hotels, excluding A la Carte restaurants serving dinner.

A special VIP Concept is offered to our guests staying in King Suites, Owner Villas, as well as to Platinum Card holders and Long Stay guests (stays of 28 nights or more).

For Guests Wishing to Purchase the VIP Concept: The VIP Concept provides complimentary access to all food and beverage services included in the concept and offered to in-house guests at Gloria Serenity Resort, Gloria Golf Resort, and Gloria Verde Resort, excluding A la Carte restaurants serving dinner. The VIP Concept is valid provided that all guests staying in the same room agree to pay the daily per-person fee. Guests may choose to benefit from this service throughout their stay or on a daily basis, according to their preference.

The changes apply to all stays from 01.04.2026 onwards, regardless of the booking date.

	Gloria Golf Resort A La Carte Restaurant	Gloria Serenity Resort & Gloria Verde Resort Main Restaurant, Snack Restaurant and Bar	Gloria Serenity Resort & Gloria Verde Resort A La Carte Restaurant (except GSR Teppanyaki A la Carte)	24/7 room service (from the menu)	Discounted laundry service
King Suite	✓	✓	✓	✓	-
Owner Villa	✓	✓	✓	✓	-
Platinum Card Holders	✓	✓	✓	✓	%15
Long Stay	✓	✓	✓	✓	%50

Gloria Golf Resort King Suite and Owner Villa guests, Platinum cardholders and Long Stay (28 nights or more) guests Teppanyaki Restaurant All A La Carte restaurants within Gloria Hotels & Resorts except Gloria Hotels & Resorts are entitled to free use once a week.



SPECIAL ROOM TYPES PRIVILEGED SERVICES



GLORIA GOLF RESORT SPECIAL ROOM TYPES PRIVILEGES	GLORIA VILLA	EXECUTIVE VILLA	KING SUITE	OWNER VILLA
Glorian Guest Service Agent	✓	✓	✓	✓
Private butler	•	•	•	✓
Private maid	•	•	•	✓
Buggy	•	•	•	✓
Pavillion (summer season)	•	•	✓	✓
3 hotels all-inclusive usage	•	•	✓	✓
3 hotels A La Carte Restaurant usage	•	•	✓*	✓*
24-hour room service (from the menu)	•	•	•	•
Special welcome set-up	✓	✓	✓	✓
Atelier Rebul Signature Cosmetics	✓	✓		
VIP Bvlgari Cosmetics			✓	✓
Wireless internet	✓	✓	✓	✓
High speed wireless internet	•	•	✓	✓
Private transfer airport - hotel - airport	•	•	✓	✓
Airport Fast Track service	•	•	✓	✓
Special breakfast at L'ancora A La Carte Restaurant	✓	✓	✓	✓

• Subject to extra charge | ✓ Free of charge

*Guests staying in the King Suite and Owner Villa at Gloria Golf Resort, as well as Platinum Card holders and Long Stay guests (28 nights and more), are entitled to one complimentary use per week at all À La Carte restaurants within Gloria Hotels & Resorts, excluding the Teppanyaki À La Carte Restaurant.

The Teppanyaki À La Carte Restaurant at Gloria Serenity Resort is available at an additional charge for all guests.

FOOD & BEVERAGE SERVICES

Restaurant	Konsept	Menü	Working Hours		Location	Details	Gloria All Inclusive
			Summer season	Winter season			
Anatolia Main Restaurant	International	Open buffet	Breakfast 07:00 - 10:30 Lunch 12:30 - 14:30 Dinner 19:00 - 21:30	Breakfast 07:00 - 10:30 Lunch 12:30 - 14:30 Dinner 18:30 - 21:00	Main building (covered dining area & terrace)	<ul style="list-style-type: none"> • Detoxifying fresh fruit juices for breakfast • Ice Cream Service 12:30 - 14:30 19:00 - 21:30 • "HIPP" products station • Gluten-free, lactose-free, vegan and diet menu options available 	✓
Mosaique Main Restaurant	International	Open buffet	Breakfast 07:00 - 10:30 Lunch 12:30 - 14:30 Dinner 19:00 - 21:30 Night Snack 00:00 - 02:00	Breakfast 07:00 - 10:30 Lunch 12:30 - 14:30 Dinner 18:30 - 21:00	Main building (covered dining area & terrace)	<ul style="list-style-type: none"> • Detoxifying fresh fruit juices for breakfast • "HIPP" products station • Gluten-free, lactose-free, vegan and diet menu options available 	✓
Harem A La Carte Restaurant	International	A La Carte	24/7	19:00 - 23:00	Main building, lobby level, indoor dining area	Free of charge	✓
Turkuaz A La Carte Restaurant	Grill House & BBQ	A La Carte	June 1-October 31 19:00 - 23:00	Closed	Poolside, outdoor area	Subject to a fee	
Pescado A La Carte Restaurant	Spanish cuisine	A La Carte	19:00 - 23:00	19:00 - 23:00	Main building, lobby level, indoor dining area	Subject to a fee	
L'ancora A La Carte Restaurant	Italian cuisine	A La Carte	19:00 - 23:00	19:00 - 23:00	Main building, lobby level, indoor dining area & terrace	Subject to a fee	
Elia Greek Restaurant	Greek cuisine	A La Carte	June 1-October 31 19:00 - 23:00	Closed	Open space, by the river	Subject to a fee	
Garden Pool Restaurant	Continental	A La Carte & open buffet	08:00 - 11:00	Closed	Family Suite by the pool, outdoor area		✓
Garden Pool Snack	International	A La Carte	12:00 - 16:00	Closed	Family Suite by the pool, outdoor area	Ice cream service 09:00 - 18:30	✓
Turkuaz Snack	Turkish cuisine	A La Carte	12:00 - 16:00	Closed	Poolside, outdoor area		✓
Gloria Pub Snack	International	A La Carte	12:00 - 16:00	Closed	Outdoor area by the river and pool	Ice cream service 09:00 - 19:00	✓
Galeon Snack	International	A La Carte	12:00 - 17:00	Closed	Beach and riverside, open space	Ice cream service 09:00 - 19:00	✓
L'ancora VIP Breakfast	International	A La Carte	08:00 - 11:00	08:00 - 11:00	Main building, lobby level, indoor dining area & terrace	Exclusive breakfast for VIP guests and members of the Glorian loyalty program.	
Gloria Patisserie	Selection of desserts, cakes and homemade chocolates	A La Carte	11:00 - 18:00	11:00 - 18:00	Main building		✓
Pavilion	Private food & beverage service on the beach	A La Carte	09:00 - 17:00	Closed	On the beach, special for pavilion guests	<ul style="list-style-type: none"> • Subject to a fee • Butler service 09:00 - 18:00 beverage service 12:00 - 17:00 food service 	
Room service	Special menu	A La Carte	*24 hours paid	*24 hours paid	In-room service		
What-When-Where Service	Children's menu	A La Carte	24 hours	24 hours		<ul style="list-style-type: none"> • Free of charge for the age range 00 - 03,99 years • Requests must be notified to guest relations in advance 	✓

* Room Service (from the menu): Complimentary 24/7 for guests staying in the King Suite and Owner Villa, Platinum Card holders, and Long Stay guests (28 nights or more). Available at an additional charge for all other guests.

- Evening À La Carte dining: Guests staying in the King Suite and Owner Villa, Platinum Card holders, and Long Stay guests (28 nights or more) are entitled to one complimentary visit per week to all À La Carte restaurants within Gloria Hotels & Resorts, excluding the Teppanyaki À La Carte Restaurant.
- For other room types, all evening À La Carte restaurants within Gloria Hotels & Resorts are available at an additional charge per person.
- For guests staying under the Gloria All Inclusive concept, food & beverage services received at our other hotels are charged at a 50% discount based on menu prices (excluding evening À La Carte restaurants).
- À La Carte restaurant service days may vary depending on operational occupancy.

BARS

Bar	Concept	Menu	Working Hours		Location	Details	Gloria All Inclusive
			Summer season	Winter season			
Lobby Bar	Lobby Bar & Lounge	Alcoholic & non-alcoholic & hot drinks & fresh juices	24 hours	24 hours	Main building, lobby floor		✓
Oasis Bar	Bar & Lounge Patisserie	Alcoholic & non-alcoholic & hot drinks & fresh juices	11:00 - 00:00	11:00 - 00:00	Main building, lobby floor	From 1 May to 31 October Between 18:00 - 21:00 Sushi service is available. Waffle service 16:00 - 18:00	✓
Garden Pool Bar	Pool Bar	Alcoholic & non-alcoholic & hot drinks & fresh juices	09:00 - 18:30	Closed	Family Suite by the pool, outdoor area	Ice cream service 09:00 - 18:30	✓
Galeon Bar	Beach Bar	Alcoholic & non-alcoholic & hot drinks & fresh juices	09:00 - 19:00	Closed	By the beach, open area	Ice cream service 09:00 - 19:00	✓
Pier Bar	Pier Bar	Alcoholic & non-alcoholic & hot drinks & fresh juices	09:00 - 19:00	Closed	On the pier, open space		✓
Gloria Pub	Bar	Alcoholic & non-alcoholic & hot drinks & fresh juices	09:00 - 00:00	Closed	Outdoor area by the river and pool	Ice cream service 09:00 - 19:00	✓
Aqua Bar	Aquapark Bar	Soft & hot drinks & fruit juices	09:00 - 18:00	Closed	Outdoor area by the aquapark	Ice cream service 09:00 - 18:00 Common use of GHR	✓
Cafe Gloria	Bar	Alcoholic & non-alcoholic & hot drinks & fresh juices	16:00 - 00:00	18:00 - 00:00	Main building, lobby floor, indoor area & terrace		✓
Wurlitzer Bar	Bar	Alcoholic & non-alcoholic & hot drinks & fresh juices	16:00 - 00:00	16:00 - 00:00	Gloria Serenity Resort, Game Center, indoor area	Common use of GHR	✓
Insomnia Disco Bar	Disco Bar	Alcoholic & non-alcoholic & hot drinks & fresh juices	23:00 - 02:00	23:00 - 02:00 Only on Saturday	Gloria Serenity Resort, Game Center, indoor area	Common use of GHR	✓
Arena Bar	Amphitheatre Bar	Alcoholic & soft drinks	Provides service during the activity	Closed	Gloria Serenity Resort, amphitheatre, open space	Common use of GHR	✓
G-Venture Bar	Concert & Party Bar	Alcoholic & non-alcoholic & hot drinks & fresh juices	Provides service during the activity	Closed	Beach concert area	Common use of GHR	✓
G-Venture Private Lounge	Concert & Party Bar	Alcoholic & non-alcoholic & hot drinks & fresh juices	Provides service during the activity	Closed	Beach concert area	Subject to a fee	✓
Mini Bar	In-room mini bar	Alcoholic & soft drinks, tea, coffee, biscuits, chocolate, crispy apples, confectionery, crisps	During your stay	During your stay	Inside the room	Refilled once a day	✓

LA SOURCE SPA

We present the spiritual touches found in the Far East in splendid harmony with soft musical tones that relax your soul while your aromatic massages revitalize your physical senses.



DETAILS

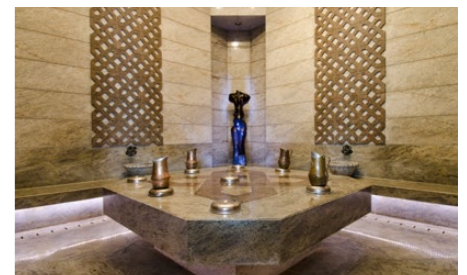
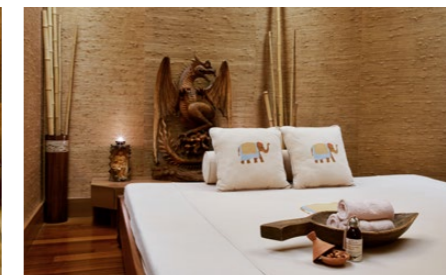
Covers an area of 800 m².
Located on the lobby floor of the main building.
Open daily between 09:00 and 20:00.
Between 13:00 and 15:00, guests under the age of 12 may use the Turkish bath, sauna, and relaxation areas only when accompanied by a parent.
For the safety and well-being of our young guests aged 12-16, use of the Turkish bath, sauna, and relaxation areas is permitted between 13:00 and 15:00.

SERVICES

Indoor pool
Indoor children's pool
Rest area
There is an accessible lift for guests with disabilities to reach the pool.
15 treatment rooms
1 private SPA Suite
Skin, face, and body treatments (world-famous brands such as Thermes Marins, Jüliette Armand and CACI Ultra)
Massages and treatments
1 private bath
Hairdresser services
Manicure - pedicure
1 Bio & 1 Fin sauna
1 Turkish bath
Steam room
Changing rooms with lockers
SPA Pavilion (closed in winter)

PAID SERVICES

All massage services
Special hammam services
All skin, face, and body care services
Hairdresser services
Manicure - pedicure
SPA cosmetics
SPA Pavilion



POOLS AND BEACH



FEATURES

- Blue flag awarded
- 500 m long and clean sand-pebble beach
- Wood sunbeds
- 2 special sunbeds for guests with disabilities
- Opening and closing dates and times of beaches and pools may vary according to weather conditions

FACILITIES

- Beach restaurant
- Beach bar
- Pier
- Pier bar
- Beach pavillions

BEACH ACTIVITIES AND SERVICES

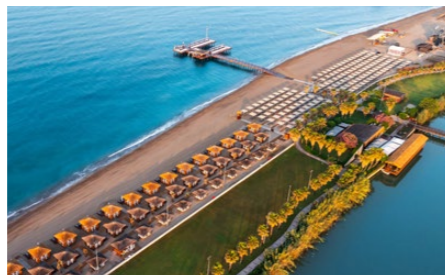
- Beach volleyball
- Children's playground
- Trampoline
- QR menu service (09:00 – 19:00)
- Beach towel service
- Security
- Lifeguard

PAID SERVICES

- Water sports activities (08:00 - 20:00)
- Daily pavilion use (09:00 - 18:00)
- SPA treatment area
- Art studio

PAVILION DETAILS:

- Operates during the summer season
- Operating hours: 09:00 – 18:00
- Shared butler service
- Exclusive service for all pavilion guests
- Food service from the menu between 12:00 – 18:00
- Hotel-concept beverage menu
- Mini bar, safe box, fan
- Towels
- Waiter call button



POOLS AND BEACH



GLORIA GOLF RESORT POOLS	STATE OF USE	OUTDOOR	INDOOR	SEA WATER	SWEET WATER	DEPTH	AREA	SUMMER SEASON	WINTER SEASON	HEATED
Semi-Olympic Outdoor Pool	Communal area	✓			✓	180 cm	400 m ²	08:00-20:00	Open	✓
Child Pool	Communal area	✓			✓	50 cm	25 m ²	08:00-20:00	08:00-20:00	✓
Outdoor Pool	Communal area	✓			✓	140 cm	1280 m ²	08:00-20:00	Closed	
Child Pool	Communal area	✓			✓	50 cm	113 m ²	08:00-20:00	Closed	
Children's Sand Pool (with small slide)	Communal area	✓			✓	50 cm	153 m ²	08:00-20:00	Closed	
Family Suite Pool	Communal area	✓			✓	140 cm	420 m ²	08:00-20:00	Closed	
Family Suite Kids Pool	Communal area	✓			✓	50 cm	40 m ²	08:00-20:00	Closed	
Indoor pool (in the SPA centre) There is a lift for disabled guests to access the pool	Communal area		✓		✓	140 cm	113 m ²	08:00-20:00	08:00-20:00	✓
Children's Pool (in the SPA centre)	Communal area		✓		✓	50 cm	14 m ²	08:00-20:00	08:00-20:00	✓
Owner Villa Havuzu	Private	✓			✓	140 cm	78 m ²			✓

- Children under 12 years of age should enter the pool under the supervision of their parents.
- Smoking is prohibited around the children's pool area.
- Sunbeds and towels are free of charge.
- Heating dates of heated pools may vary depending on weather conditions.

AQUAPARK

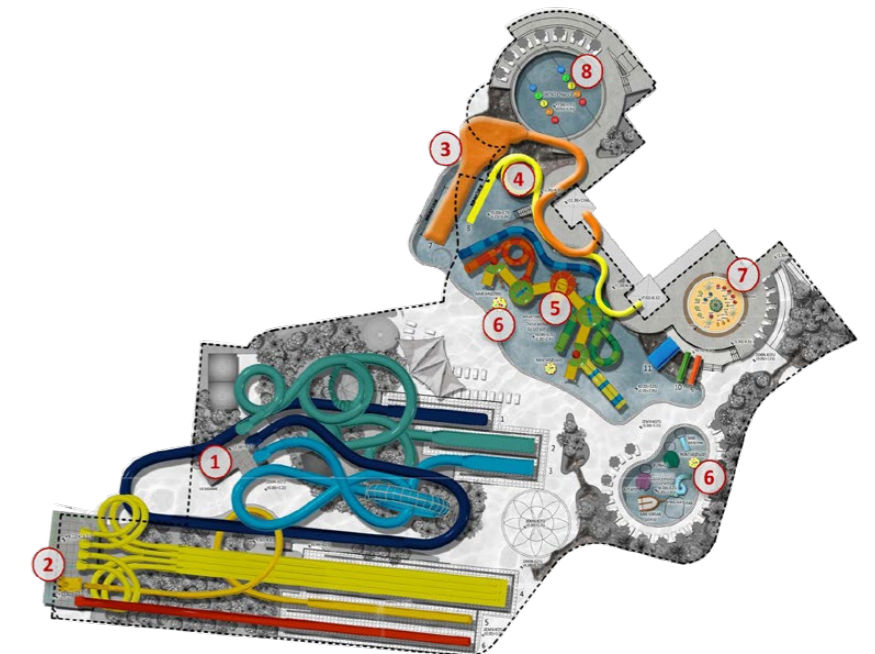
There are 21 slides in total, 9 for adults and 12 for children.



AQUAPARK



- LEJANT
1. AQUAPARK ENTRANCE
 2. WC&SHOWER
 3. CANOPY
 4. SUNBED
 5. UNNATURAL ROCK
 6. BOAT SLIDES
BLACKHOLE & UPHILL
FLYING BOATS KOMB.
FLYING SAW & SPHERE KOMB.
RIFT SLIDE
 7. FAST SLIDES
WINDIGO X4
LOOPING ROCKET
FREEFALL
 8. BODY MAGICONE
 9. AQUATUBE
 10. KIDS SLIDES
KIDS FREEFALL X2
KIDS WIDE SLIDE
 11. SPECIAL TYPE AQUAWATER
 12. SPRAY ACTION AREA (70m²)
 13. KIDS ANIMATIONS
 14. DEPOT FOR BOAT
 15. CAFE
 16. OBSTACLE TRACK



- LEJANT
1. MAIN SLIDES
BLACKHOLE & UPHILL
FLYING BOAST KOMB.
FLYING SAW & SPHERES COMB.
RIFT SLIDE
 2. FAST SLIDES
WINDIGO (4X)
LOOPING ROCKET
FREEFALL
 3. BODY MAGICONE
 4. AQUATUBE
 5. SPECIAL TYPE AQUATOWER
 6. KIDS ANIMATIONS
 7. SPRAY ACTION AREA (60m²)
 8. OBSTACLE TRACK

- It is forbidden to enter the pool when the Aquapark is closed.
- Aquapark opening and closing times may vary according to weather conditions.
- Between 1 May and 31 October, the Aquapark is open depending on weather conditions. Hotel management reserves the rights to close the Aquapark when deemed necessary.
- The warnings of the lifeguard on duty and the warning signs must be followed at all times.

MEETINGS, ORGANISATIONS AND WEDDINGS

Meeting rooms and equipment are subject to additional charges.
Please contact our MICE department for special service and price details for meeting groups.



MEETING ROOM	LENGTH	WIDTH	AREA	HEIGHT	BANKET	U TABLE LAYOUT	THEATRE	CLASS
Manyas	48 m	22 m	1056 m ²	7 m	800 Person	-	1200 Person	750 Person
Manyas I, III	15 m	22 m	330 m ²	7 m	220 Person	60 Person	350 Person	200 Person
Manyas II	17,5 m	22 m	396 m ²	7 m	260 Person	60 Person	430 Person	250 Person
Foyer / Foyer	-	-	845 m ²	-	-	-	-	-

MEETING ROOM	LENGTH	WIDTH	AREA	HEIGHT	BANKET	U TABLE LAYOUT	THEATRE	CLASS
Kırlangıç	39 m	17 m	663 m ²	5 m	450 Person	-	720 Person	420 Person
Kırlangıç II	13 m	17 m	221 m ²	5 m	150 Person	42 Person	240 Person	140 Person
Kırlangıç I, III	12,5 m	17 m	210 m ²	5 m	150 Person	36 Person	240 Person	140 Person

MEETING ROOM	LENGTH	WIDTH	AREA	HEIGHT	BANKET	U TABLE LAYOUT	THEATRE	CLASS
Turna (Takes Daylight)	16,5 m	7 m	115 m ²	3 m	70 Person	45 Person	100 Person	70 Person
Turna I	7 m	7 m	50 m ²	3 m	-	15 Person	50 Person	35 Person
Turna II	5 m	7 m	35 m ²	3 m	-	15 Person	30 Person	20 Person
Turna III	4,5 m	7 m	32 m ²	3 m	-	15 Person	20 Person	15 Person

MEETING ROOM	LENGTH	WIDTH	AREA	HEIGHT	BANKET	U TABLE LAYOUT	THEATRE	CLASS
Anka (Takes Daylight)	22 m	6,5 m	143 m ²	3 m	-	60 Person	120 Person	90 Person
Anka I, II, III, IV	5,5 m	6,5 m	35 m ²	3 m	-	15 Person	30 Person	20 Person
Martı (Takes Daylight)	5,5 m	5,5 m	30 m ²	3 m	-	15 Person	15 Person	-
Saka	4,5 m	5 m	23 m ²	3 m	-	-	15 Person	-
Kumru (Takes Daylight)	7,5 m	5,5 m	42 m ²	3 m	-	20 Person	30 Person	20 Person

As Gloria Hotels & Resorts, we would like to share your happiness as you set sail for the new beginning in your life.

Gloria Hotels & Resorts has an experienced cuisine with all kinds of flavours and an efficient team to make your wedding unforgettable. All you need to do is say 'YES'. Gloria Hotels & Resorts will take care of all the details...

At Gloria Hotels & Resorts we want to thank you for the trust you have put in us - and we promise to support you in all your special celebrations.



GLORIA GOLF RESORT - MAP



- | | | | | |
|---|---|---|--|--|
| <p>ROOMS</p> <ul style="list-style-type: none"> A. MAIN BUILDING B. EXECUTIVE VILLAS C. GLORIA VILLAS D. GARDEN BUILDINGS & JUNIOR SUITES E. JUNIOR SUITES F. FAMILY SUITES J. OWNER VILLAS | <p>FOOD & BEVERAGE</p> <ul style="list-style-type: none"> 1. ANATOLIA MAIN RESTAURANT 2. MOSAIQUE MAIN RESTAURANT 3. OASIS BAR 4. GARDEN POOL RESTAURANT & BAR 5. NEW CAFE GLORIA 6. PIER BAR 7. PREMIUM PIER BAR 8. AQUA BAR 9. PAVILION BAR 10. PESCADDO A LA CARTE 11. HAREM A LA CARTE 7/24 12. ELIA GREEK A LA CARTE RESTAURANT 13. GLORIA PATISSERIE 14. L'ANCORA A LA CARTE 15. GLORIA PUB & SNACK RESTAURANT 16. TURKUAZ TURKISH BARBEQUE & STEAK HOUSE 17. GALEON SNACK RESTAURANT & BAR | <p>BEACH & POOL</p> <ul style="list-style-type: none"> 18. MAIN POOL 19. HEATED POOL 20. BEACH PAVILIONS (EXTRA) 21. CHILDREN POOL 22. TOWEL DESK 23. AQUAPARK 24. CHILDREN AQUAPARK <p>KIDS</p> <ul style="list-style-type: none"> 25. ART STUDIO 26. GOGI FUN JUNGLE 27. GOGI KIDS CLUB 28. TRAMPOLINE | <p>OUTLETS & FACILITIES</p> <ul style="list-style-type: none"> 29. RECEPTION 30. SHOPPING AREA 31. LA SOURCE SPA, INDOOR POOL 32. WELLNESS AREA 33. CONVENTION CENTER 34. DOCTOR 35. GUEST RELATIONS | <p>ACTIVITIES</p> <ul style="list-style-type: none"> 36. ARENA & ENTERTAINMENT CENTER, INSOMNIA NIGHT CLUB 37. TENNIS COURTS 38. BEACH VOLLEY 39. G-VENTURE 40. FOOTBALL FIELD 41. GLORIA MINI FARM 42. FIT GLORIA 43. PADEL COURTS 44. CAR PARK 45. CHARGING STATION 46. WATER SPORTS |
|---|---|---|--|--|





GLORIA VERDE RESORT

The Magnificent Combination of the Green and the Blue...

The Gloria Verde Resort is located in Belek, in the pine forests of the Mediterranean, directly on the seafront. Thanks to its matchless nature and outstanding service concept, Gloria Verde offers an unforgettable vacation experience for your family. The opportunity to enjoy every moment of your vacation in nature, comfortably and quietly awaits you...

Gloria Verde Resort offers more than what you expect from your vacation.



GENERAL INFORMATION

Gloria Verde Resort opening date: 2001
 Category: 5* Hotel
 Company: Özaltın Holding
 Season: full year
 Gloria Hotels & Resorts total area: 2.400.000 m²
 Gloria Verde Resort area: 68.000 m²
 Address: Belek Mah. 20. Sokak No: 7, Serik - Antalya / Türkiye
 Telephone: +90 242 710 05 00
 E-mail: info@gloria.com.tr
 Website: www.gloria.com.tr
 WI-FI: rooms and public areas (free of charge)
 High-speed internet in rooms and public areas (surcharge)
 Credit cards: Visa, Mastercard, Amex
 Languages Spoken: Turkish, English, Russian, German
 To download current pictures, videos and factsheets: stock.gloria.com.tr

ACCOMMODATION

There are a total of 4 elevators in the 6 storey main building of the hotel. Within the garden area, there are three three-storey blocks accommodating Suite and Family Suite rooms, served by six elevators. Along the boundary of the golf course, there is a Presidential Villa as well as Select Villas, each comprising two storeys.

ACCOMMODATION POLICY

Pets not allowed
 Hotel check-in time: 06:00
 Hotel check-out time: 19:00
 Room check-in time: 15:00
 Room check-out time: 12:00
 Early check-in and late check-out policy: Early check-in or late check-out is subject to availability. Depending on availability, early check-in before 06:00 or late check-out after 19:00, 100% of the daily room rate is applied. In other time zones, early check-in and late check-out prices determined by the hotel are applied.
 Smoking: The use of tobacco products and electronic cigarettes is not permitted indoors.
 Age limit policy: Guests under 18 years of age are not accommodated without a parent.
 Visitor policy: Hotel guests may receive visitors at the hotel between 09:00 and 23:00, subject to an additional fee. Visitors are required to present their passport or identification card at the entrance. Visitors are not permitted to enter guest rooms. Gloria Hotels & Resorts reserves the right to refuse this service at its sole discretion.
 Transfer between hotels: Guests are provided with free shuttle service between Gloria Hotels.

LOCATION & TRANSPORT

Antalya Airport: 38 km
 Gazipasa Airport: 150 km
 Antalya city centre: 48 km
 Nearest settlement centre: 3,5 km (Belek)
 Beach: Private sand/gravel beach and 1 pier
 Gloria Golf Club: 1 km

ROOM DETAILS

Total Rooms: 293
 Standard Room: 154
 Suites: 118
 Villas: 21
 Bed Capacity: 732
 Room Distribution:
 150 Standard Rooms + 4 Disabled Rooms
 22 Junior Suites
 47 Suites
 39 Family Suites
 8 Deluxe Suites
 2 King Suites
 20 Select Villas
 1 Presidential Villa

STANDARD ROOM

Main building | 27 m² + 5 m² Balcony | Garden view
Maximum number of Person: 2 adults + 2 children (0 - 11.99) | 3 adults



ROOM FEATURES

- 1 room
- Carpet floor (parquet in ground floor rooms)
- Seating area with single armchair
- Wardrobe
- Curtains
- Writing desk
- Central air conditioning
- Full-length mirror
- Suitcase rack
- Balcony or terrace
- Table and chair set on the balcony or terrace
- Laundry drying rack on the balcony or terrace

BED

- 2 Queen beds (140x200)
- Special manufactured mattress
- Pillow menu
- Baby Cot (available on request, 70x110)
- Rollaway extra bed (available on request, 90x200)

BATHROOM

- Shower cabin and WC
- Gloria bath and shower products
- Baby bath products (optional)
- Children's bathrobe (optional, 2 - 11.99)
- Bathrobe
- Slippers
- Illuminated make-up mirror
- Hair dryer
- Telephone
- Scales

TECHNOLOGY

- LCD TV - IP TV
- Telephone
- Safe box
- Wireless internet access

SERVICES & FACILITIES

- Glorian Guest Assistant (Gloria mobile application)
- Tea & coffee set-up
- Kettle
- Minibar (replenished free of charge once daily)
- Daily housekeeping
- Towel change every other day
- Linen change every other day
- Iron and ironing board (available upon request)
- Laundry services (available for a fee, from 08:00 to 00:00)



*There are 4 Standard rooms that are tailored to the needs of our disabled guests.



JUNIOR SUITE

Main building | 31 m² + 5² Balcony | Garden view
Maximum number of Person: 2 adults + 2 children (0 - 11.99) | 3 adults



ROOM FEATURES

- 1 room
- Carpet floor (parquet in ground floor rooms)
- Seating area with sofa and coffee table
- Table and chair set
- Writing desk
- Wardrobe
- Curtains
- Central air conditioning
- Full-length mirror
- Suitcase rack
- Balcony or terrace
- Table and chair set on the balcony or terrace
- Laundry drying rack on the balcony or terrace

BED

- 1 French bed (180x200)
- Special manufactured mattress
- Pillow menu
- Baby Cot (available on request, 70x110)
- Sofa (90x190)
- Rollaway extra bed (available on request, 90x200)

BATHROOM

- Shower cabin and WC
- Gloria bath and shower products
- Baby bath products (optional)
- Children's bathrobe (optional, 2 - 11.99)
- Bathrobe
- Slippers
- Illuminated make-up mirror
- Hair dryer
- Telephone
- Scales

TECHNOLOGY

- LCD TV - IP TV
- Telephone
- Safe box
- Wireless internet access

SERVICES & FACILITIES

- Glorian Guest Assistant (Gloria mobile application)
- Tea & coffee set-up
- Kettle
- Minibar (replenished free of charge once daily)
- Daily housekeeping
- Towel change every other day
- Linen change every other day
- Iron and ironing board (available upon request)
- Laundry services (available for a fee, from 08:00 to 00:00)



SUITE

Main building - Garden building (upper floors) | 40 m² + 5 m² Balcony | Garden view
Maximum number of Person: 2 adults + 2 children (0 - 11.99) | 3 adults + 1 child (0 - 11.99)



ROOM FEATURES

- 2 rooms: 1 bedroom & 1 living room
- Carpet floor (parquet in ground floor rooms)
- Seating area with sofa, single armchair, pouf and coffee table
- Writing desk
- Wardrobe
- Curtains
- Central air conditioning
- Full-length mirror
- Suitcase rack
- Balcony or terrace
- Table and chair set on the balcony or terrace
- Laundry drying rack on the balcony or terrace

BED

- 1 French bed (180x200)
- Special manufactured mattress
- Pillow menu
- Baby Cot (available on request, 70x110)
- Sofa (90x190)
- Rollaway extra bed (available on request, 90x200)

BATHROOM

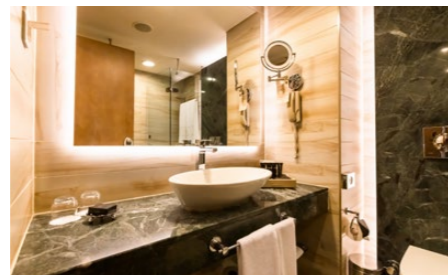
- Shower cabin and WC (single bathroom, main building rooms)
- Bath and WC (single bathroom, garden building rooms)
- Gloria bath and shower products
- Baby bath products (optional)
- Children's bathrobe (optional, 2 - 11.99)
- Bathrobe
- Slippers
- Illuminated make-up mirror
- Hair dryer
- Telephone
- Scales

TECHNOLOGY

- 2 LCD TV - IP TV
- Telephone
- Safe box
- Wireless internet access

SERVICES & FACILITIES

- Glorian Guest Assistant (Gloria mobile application)
- Schiller capsule coffee machine (with water heating option)
- Schiller herbal tea selection
- Minibar (replenished free of charge once daily)
- Daily housekeeping
- Towel change every other day
- Linen change every other day
- Iron and ironing board (available upon request)
- Laundry services (available for a fee, from 08:00 to 00:00)



FAMILY SUITE

Garden building | 40 m² + 5 m² Balcony | Garden view
Maximum number of Person: 4 adults + 1 child (0 - 11.99)



ROOM FEATURES

- 2 rooms: 2 bedrooms
- Carpet floor (parquet in ground floor rooms)
- Writing desk
- Wardrobe
- Curtains
- Central air conditioning
- Full-length mirror
- Suitcase rack
- Balcony or terrace
- Table and chair set on the balcony or terrace
- Laundry drying rack on the balcony or terrace

BED

- 1st bedroom: 1 French bed (180x200)
- 2nd bedroom: 2 single beds (100x200)
- Special manufactured mattress
- Pillow menu
- Baby Cot (available on request, 70x110)
- Rollaway extra bed (available on request, 90x200)

BATHROOM

- Bath and WC (one bathroom)
- Gloria bath and shower products
- Baby bath products (optional)
- Children's bathrobe (optional, 2 - 11.99)
- Bathrobe
- Slippers
- Illuminated make-up mirror
- Hair dryer
- Telephone
- Scales

TECHNOLOGY

- 2 LCD TVs - IP TV
- Telephone
- Safe box
- Wireless internet access

SERVICES & FACILITIES

- Glorian Guest Assistant (Gloria mobile application)
- Tea & coffee set-up
- Kettle
- Minibar (replenished free of charge once daily)
- Daily housekeeping
- Towel change every other day
- Linen change every other day
- Iron and ironing board (available upon request)
- Laundry services (available for a fee, from 08:00 to 00:00)



DELUXE SUITE

Main building | 80 m² | Garden view
Maximum number of Person: 4 adults + 1 child (0 - 11.99)



ROOM FEATURES

- 2 rooms: 2 bedrooms
- Carpet floor (parquet in ground floor rooms)
- 1st room: seating group with sofa, single armchair and coffee table
- 2nd room: seating are with sofa, pouffe and coffee table
- Wardrobe
- Curtains
- Central air conditioning
- Full-length mirror
- Suitcase rack
- Balcony or terrace
- Table and chair set on the balcony or terrace
- Laundry drying rack on the balcony or terrace

BED

- 1st bedroom: 2 Queen beds (140x200)
- 2nd bedroom: 2 single beds (100x200)
- Special manufactured mattress
- Pillow menu
- Baby Cot (available on request, 70x110)
- Sofa (90x190)
- Rollaway extra bed (available on request, 90x200)

BATHROOM

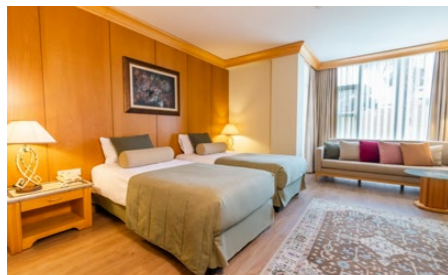
- 2 separate bathrooms
- 1st bathroom: shower cabin, jacuzzi and WC
- 2nd bathroom: shower cabin and WC
- Bvlgari bath and shower products
- Baby bath products (optional)
- Children's bathrobe (optional, 2 - 11.99)
- Bathrobe
- Slippers
- Illuminated make-up mirror
- Hair dryer
- Telephone
- Scales

TECHNOLOGY

- 2 LCD TVs - IP TV
- Telephone
- Safe box
- Wireless internet access

SERVICES & FACILITIES

- Glorian Guest Assistant (Gloria mobile application)
- Schiller capsule coffee machine (with water heating option)
- Schiller herbal tea selection
- Kettle
- Minibar (replenished free of charge once daily)
- Daily housekeeping
- Towel change every other day
- Linen change every other day
- Turndown service
- Iron and ironing board (available upon request)
- Laundry services (available for a fee, from 08:00 to 00:00)



KING SUITE

Main building | 155 m² + 16 m² Balcony | Sea view
Maximum number of Person : 4 adults + 2 children (0 - 11.99) | 5 adults



ROOM FEATURES

- 3 rooms: 2 bedrooms & 1 living room
- Carpet floor (in bedrooms)
- Parquet floor (in the living room)
- Living room: study corner, dining table, seating group with sofa, single armchair and coffee table
- 1st bedroom: seating group with single armchair and coffee table, study desk
- 2nd bedroom: seating group with sofa, single armchair and coffee table, study desk
- Dressing room
- Wardrobe
- Curtains
- Central air conditioning
- Full-length mirror
- Suitcase rack
- 2 balconies
- Table and chair set on the balconies
- Laundry drying rack on the balconies

BED

- 1st bedroom: 1 King-size bed (200x200)
- 2nd bedroom: 2 Queen beds (140x200)
- Special manufactured mattress
- Pillow menu
- Baby Cot (available on request, 70x110)
- 2 Sofas (60x165 & 70x210)
- Rollaway extra bed (available on request, 90x200)

BATHROOM

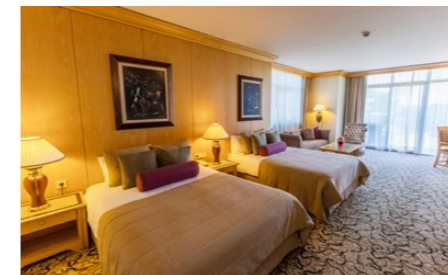
- 2 separate bathrooms and 3 WCs
- 1st bathroom: shower cabin, jacuzzi and WC
- 2nd bathroom: shower cabin, jacuzzi and WC
- Bvlgari bath and shower products
- Baby bath products (optional)
- Children's bathrobe (optional, 2 - 11.99)
- Bathrobe
- Slippers
- Illuminated make-up mirror
- Hair dryer
- Telephone
- Scales

TECHNOLOGY

- 3 LCD TVs - IP TV
- Telephone
- Safe box
- High-speed wireless internet access

SERVICES & FACILITIES

- Glorian Guest Assistant (Gloria mobile application)
- Dedicated villa guest relations service
- Round-trip transfer service (once during the stay)
- Fast Track service (per person)
- 1 pavilion (available during the summer season)
- Schiller capsule coffee machine (with water heating option)
- Schiller herbal tea selection
- Kettle
- Minibar (replenished free of charge once daily)
- Daily housekeeping
- Towel change every other day
- Linen change every other day
- Turndown service
- Iron and ironing board
- Laundry services (available for a fee, from 08:00 to 00:00)



SELECT VILLA

Garden | Duplex | 86 m² | Garden, golf course and communal pool view
Maximum number of Person: 4 adults + 2 children (0 - 11.99) | 5 adults



ROOM FEATURES

- 3 rooms: 2 bedrooms & 1 living room
- Parquet floor (in bedrooms)
- Granite floor (in the living room)
- Living room: kitchenette, washer-dryer, washbasin, dining table, seating area with sofa and coffee table
- 1st bedroom: study desk
- 2nd bedroom: study desk
- Wardrobe
- Curtains
- Central air conditioning
- Full-length mirror
- Suitcase rack
- Private terrace
- Table and chairs, and sun loungers on the terrace
- Laundry drying rack on the terrace
- Direct access to the shared pool

BED

- 1st bedroom (upper floor): 1 French bed (180x200)
- 2nd bedroom (ground floor): 2 single beds (100x200)
- Special manufactured mattress
- Pillow menu
- Baby Cot (available on request, 70x110)
- Sofa (65x185)
- Rollaway extra bed (available on request, 90x200)

BATHROOM

- 2 separate bathrooms and 2 WCs
- 1st bathroom (upper floor): double washbasin, shower cabin, jacuzzi and WC
- 2nd bathroom (ground floor): shower cabin and WC
- Bvlgari bath and shower products
- Baby bath products (optional)
- Children's bathrobe (optional, 2 - 11.99)
- Bathrobe
- Slippers
- Illuminated make-up mirror
- Hair dryer
- Telephone
- Scales

TECHNOLOGY

- 3 LCD TVs - IP TV
- Telephone
- Safe box
- Wireless internet access

SERVICES & FACILITIES

- Glorian Guest Assistant (Gloria mobile application)
- Dedicated villa guest relations service
- 1 buggy
- Schiller capsule coffee machine (with water heating option)
- Schiller herbal tea selection
- Kettle
- Minibar (replenished free of charge once daily)
- Daily housekeeping
- Towel change every other day
- Linen change every other day
- Turndown service
- Iron and ironing board
- Laundry services (available for a fee, from 08:00 to 00:00)



VERDE PRESIDENTIAL VILLA

Garden | Duplex | 700 m² | Garden, golf course and private pool view
Maximum number of Person: 10 adults + 1 child (0 - 11.99)



ROOM FEATURES

- 7 rooms: 6 bedrooms & 1 living room
- Spacious study room (desktop computer, meeting table, armchair and coffee table set)
- Secretary's room (work desk, armchair and coffee table set)
- Carpeted or parquet flooring (in the bedrooms)
- Granite and parquet flooring (in the living room)
- Private professional kitchen
- Washer-dryer
- Living room: mobile bar, dining table, games table, seating area with sofas, armchairs and coffee tables
- Writing desk in the bedrooms (excluding the master bedroom)
- Walk-in dressing room in the master bedroom
- Wardrobe
- Curtains
- VRF (individually controlled) air conditioning
- Full-length mirror
- Suitcase rack
- Fitness area (sauna & jacuzzi)
- Private terrace
- Table and chair set on the terrace
- Private pool (120 m², 140 cm deep)
- Hammock and sun loungers by the pool
- Private parking for the villa

BED

- Upstairs:
 - 1st bedroom: 1 King-size bed (200x200)
 - 2nd bedroom: 2 Queen beds (140x200)
 - 3rd bedroom: 2 Queen beds (140x200)
- Ground floor:
 - 4th bedroom: 1 Queen bed (140x200)
 - 5th bedroom: 1 Queen bed (140x200)
 - 6th bedroom: 2 single beds (100x200)
- Special manufactured mattress
- Pillow menu
- Baby Cot (available on request, 70x110)
- Rollaway extra bed (available on request, 90x200)

BATHROOM

- 6 separate bathrooms and 8 WCs
- Upstairs:
 - 1st bathroom: double washbasin, shower cabin, jacuzzi and WC
 - 2nd bathroom: bath and WC
 - 3rd bathroom: bath and WC
- Ground floor:
 - 4th bathroom: shower cabin and WC
 - 5th bathroom: shower cabin and WC
 - 6th bathroom: shower cabin and WC
- Bvlgari bath and shower products
- Baby bath products (optional)
- Children's bathrobe (optional, 2 - 11.99)
- Bathrobe
- Slippers
- Illuminated make-up mirror
- Hair dryer
- Telephone
- Scales

TECHNOLOGY

- 7 LCD TVs - IP TV
- Telephone
- Safe box
- High-speed wireless internet access

SERVICES & FACILITIES

- Glorian Guest Assistant (Gloria mobile application)
- Dedicated villa guest relations service
- Round-trip transfer service (once during the stay)
- Fast Track service (per person)
- 2 buggies
- 1 pavilion (available during the summer season)
- Private butler service (08:00-21:30)
- Private chef and maid
- Schiller capsule coffee machine (with water heating option)
- Schiller herbal tea selection
- Kettle
- Minibar (replenished free of charge once daily)
- Daily housekeeping
- Towel change every other day
- Linen change every other day
- Turndown service
- Iron and ironing board
- Laundry services (available for a fee, from 08:00 to 00:00)



ROOM OVERVIEW



Room Type	Location	View	Maximum number of people	Number of rooms	Bed-room	Living room	Bed	Shower + bathtub	Room dimensions	Total
Standard Room	Main building	Garden view	2 adults + 2 children (0 - 11.99), 3 adults	1	1	-	2 Queen beds (140x200)	1 shower	27 m ²	154
Junior Suite	Main building	Garden view	2 adults + 2 children (0 - 11.99), 3 adults	1	1	-	1 French bed (180x200)	1 shower	31 m ²	22
Suite	Main building & garden	Garden view	2 adults + 2 children (0 - 11.99), 3 adults + 1 child (0 - 11.99)	2	1	1	1 French bed (180x200)	1 shower (main building) & 1 bath (garden)	40 m ²	46
Family Suite	Garden	Garden view	4 adults + 1 child (0 - 11.99)	2	2	-	1 French bed (180x200) & 2 single beds (100x200)	1 bathtub	40 m ²	40
Deluxe Suite	Main building	Garden view	4 adults + 1 child (0 - 11.99)	2	2	-	2 Queen beds (140x200) & 2 single beds (100x200)	2 showers & 1 jacuzzi	80 m ²	8
King Suite	Main building	Sea view	4 adults + 2 children (0 - 11.99), 5 adults	3	2	1	1 King bed (200x200) & 2 Queen beds (140x200)	2 showers & 2 jacuzzi	155 m ²	2
Select Villa	Garden	garden, golf course and shared pool	4 adults + 2 children (0 - 11.99), 5 adults	3	2	1+ kitchenette	1 French bed (180x200) & 2 single beds (100x200)	2 showers & 1 jacuzzi	86 m ²	20
Presidential Villa	Garden	Garden, golf course and private pool	10 adults + 1 child (0 - 11.99)	7	6	1	1 King bed (200x200) & 6 Queen beds (140x200) & 2 single beds (100x200)	4 showers & 1 jacuzzi & 2 bathtubs	700 m ²	1

VIP CONCEPT & PRIVILEGED SERVICES



VIP Concept Privileges: Guests entitled to the VIP Concept may benefit free of charge from the food and beverage services available at our other hotels, excluding A la Carte restaurants serving dinner.

A special VIP Concept is offered to our guests staying in King Suites, Presidential Villa, as well as to Platinum Card holders and Long Stay guests (stays of 28 nights or more).

For Guests Wishing to Purchase the VIP Concept: The VIP Concept provides complimentary access to all food and beverage services included in the concept and offered to in-house guests at Gloria Serenity Resort, Gloria Golf Resort, and Gloria Verde Resort, excluding A la Carte restaurants serving dinner. The VIP Concept is valid provided that all guests staying in the same room agree to pay the daily per-person fee. Guests may choose to benefit from this service throughout their stay or on a daily basis, according to their preference.

The changes apply to all stays from 01.04.2026 onwards, regardless of the booking date.

	Gloria Verde Resort A La Carte Restaurants	Gloria Serenity Resort & Gloria Golf Resort, Use of Main Restaurant, Snack Restaurant and Bar	Gloria Serenity Resort & Gloria Golf Resort Use of A la Carte Restaurants (except GSR Teppanyaki A la carte Restaurants)	24/7 room service (from the menu)	Discounted laundry service
King Suite	✓	✓	✓	✓	-
Select Villa	-	-	-	✓	-
Presidential Villa	✓	✓	✓	✓	-
Platinum Card holders (all room types)	✓	✓	✓	✓	%15
Long Stay (all room types)	✓	✓	✓	✓	%50

Guests staying at Gloria Verde Resort Presidential Villa are entitled to use all A La Carte restaurants once a week each free of charge at Gloria Hotels & Resorts except for the Teppanyaki Restaurant at Gloria Serenity Resort.

SPECIAL ROOM TYPES PRIVILEGED SERVICES



GLORIA VERDE RESORT SPECIAL ROOM TYPES PRIVILEGES	SELECT VILLA	KING SUITE	VERDE PRESIDENTIAL VILLA
Villa guest relations service	✓	✓	✓
Private butler	•	•	✓
Special maid	•	•	✓
Private chef	•	•	✓
Pavilion (summer season)	•	✓	✓
Buggy	✓	•	✓
Select Restaurant (open in summer season)	✓	✓	✓
Select Bar (open in summer season)	✓	✓	✓
Select fitness, sauna, children's playroom (available in summer season)	✓	✓	✓
3 hotel all-inclusive use (excluding A La Carte restaurants)	•	✓	✓
3 hotel A La Carte restaurants usage	•	✓*	✓*
24-hour room service (from the menu)	✓	✓	✓
Special welcome set-up	✓	✓	✓
VIP Bvlgari cosmetics	✓	✓	✓
Wireless internet	✓	✓	✓
High speed wireless internet	•	✓	✓
Private transfer airport - hotel - airport	•	✓	✓
Airport Fast Track service	•	✓	✓

• Subject to extra charge | ✓ Free of charge

*Guests staying at Gloria Verde Resort Presidential Villa are entitled to use all A La Carte restaurants once a week each free of charge at Gloria Hotels & Resorts except for the Teppanyaki Restaurant at Gloria Serenity Resort.

The Teppanyaki Restaurant is available for all guests to use at subcharge.



FOOD AND BEVERAGE SERVICES

Restaurant	Concept	Menu	Working Hours		Location	Details	Gloria All Inclusive
			Summer season	Winter season			
Mythos Main Restaurant	International	Open buffet	Breakfast 07:00 - 10:30 Lunch 12:30 - 14:30 Dinner 19:00 - 21:30	Breakfast 07:00 - 10:30 Lunch 12:30 - 14:30 Dinner 18:30 - 21:00	Main building (covered dining area & terrace)	<ul style="list-style-type: none"> • Detoxifying fresh fruit juices for breakfast • Ice cream for dinner • "HIPP" products station • Gluten-free, lactose-free, vegan and diet menu options available 	✓
Bazilika A La Carte Restaurant	French cuisine	A La Carte	19:00 - 23:00	19:00 - 23:00	Outdoor (covered dining area & terrace)	Subject to a fee	
La Famosa A La Carte Restaurant	Italian cuisine	A La Carte	19:00 - 23:00	19:00 - 23:00	Main building, lobby level (covered dining area & terrace)	Subject to a fee	
Neptuno Bar & Snacks	Late continental breakfast	A La Carte	10:30 - 12:00	Closed	By the beach, open area	Ice cream service 09:00-20:00	✓
Neptuno Bar & Snacks	Continental cuisine	A La Carte	12:00 - 16:00	Closed	By the beach, open area	Ice cream service 09:00-20:00	✓
Verde Pub Snack	Grill & mexican cuisine	A La Carte	12:00 - 16:00	Closed	Poolside, outdoor area		✓
La Famosa Snack	International	A La Carte	Closed	12:00 - 16:00	Main building, lobby level, indoor dining area & terrace		✓
Select Restaurant	International	A La Carte	08:00 - 23:00	Closed	Villa Area (indoor dining area & terrace)	For King Suite & Villa guests only	
Gloria Patisserie	Desserts, cakes and handmade chocolates	Showcase	11:00 - 18:00	11:00 - 18:00	Main building (ground floor)		✓
Pavilion	food & beverage service on the beach	A La Carte	09:00 - 18:00	Closed	On the beach, special pavilion guests	<ul style="list-style-type: none"> • Subject to a fee • Butler service 09:00 - 18:00 beverage service 12:00 - 16:00 food service 	
Room service	Special menu	A La Carte	24 hours paid*	24 hours paid*	Room service	<ul style="list-style-type: none"> • 24-hour complimentary for King Suite, Select Villa & Presidential Villa guests • 23:00 - 07:00 free of charge for other room categories (valid for the summer season) 	
What-When-Where Service	Children's menu	A La Carte	24 hours	24 hours		<ul style="list-style-type: none"> • Free of charge for the age range 00 - 03,99 years • Requests must be notified to guest relations in advance 	✓

* Room Service (from the menu): Complimentary 24/7 for King Suite, Select Villa, Presidential Villa, Platinum Card holders and Long Stay guests (28 nights or more). For all other room categories, room service is complimentary between 23:00 and 07:00 during the summer season, and available at an additional charge 24 hours a day during the winter season.

- Evening À La Carte dining: King Suite, Presidential Villa, Platinum Card holders and Long Stay guests (28 nights or more) are entitled to one complimentary dinner per week at all À La Carte restaurants within Gloria Hotels & Resorts, excluding the Teppanyaki À La Carte Restaurant.
- For all other room categories, evening À La Carte restaurants within Gloria Hotels & Resorts are available at an additional charge per person.
- For guests staying under the Gloria All Inclusive concept, food and beverage services received at our other hotels are offered with a 50% discount from the menu (excluding evening À La Carte restaurants).
- À La Carte restaurant service days may vary depending on operational occupancy.



BARS

Bar	Concept	Menu	Working Hours		Location	Details	Gloria All Inclusive
			Summer season	Winter season			
Lobby Bar	Lobby Bar & Lounge	Alcoholic & non-alcoholic & hot drinks & fresh juices	09:00 – 00:00	09:00 – 00:00	Main building, lobby floor		✓
Zodiac Bar	Bar & Lounge	Alcoholic & non-alcoholic & hot drinks & fresh juices	24 hours	24 hours	Main building, ground floor		✓
Pool Bar	Pool Bar	Alcoholic & non-alcoholic & hot drinks	09:00 – 18:00	09:00-17:00	Poolside, outdoor area	Ice cream service 09:00-18:00	✓
Pier Bar	Pier Bar	Alcoholic & non-alcoholic & hot drinks & fresh juices	09:00 – 19:00	Closed	On the pier, open space		✓
Neptuno Bar	Beach Bar	Alcoholic & non-alcoholic & hot drinks & fresh juices	09:00 – 00:00	Closed	By the beach, open area	Ice cream service 09:00 – 20:00	✓
Verde Pub Amfi Bar	Amphitheatre Bar	Alcoholic & non-alcoholic & hot drinks	Provides service during the activity	Closed	In the amphitheatre, open space		✓
Vital Bar	Detox Bar	Detox drinks	09:00 - 20:00	09:00 – 19:00	Main building, SPA centre, indoor area		✓
Select Bar	Bar	Alcoholic & non-alcoholic & hot drinks & fresh juices	08:00 – 00:00	Closed	Villa area – poolside, outdoor area	<ul style="list-style-type: none"> Exclusively serves King Suite and Villa guests Ice cream service 08:00 – 00:00 	
Wurlitzer Bar	Bar	Alcoholic & non-alcoholic & hot drinks & fresh juices	16:00 - 00:00	16:00 – 00:00	Gloria Serenity Resort, leisure centre, indoor area	Common use of GHR	✓
Insomnia Disco Bar	Disco Bar	Alcoholic & non-alcoholic & hot drinks & fresh juices	23:00 - 02:00	23:00 – 02:00 Only on Saturday	Gloria Serenity Resort, leisure centre, indoor area	Common use of GHR	✓
Arena Bar	Amphitheatre Bar	Alcoholic & soft drinks	Provides service during the activity	Closed	Gloria Serenity Resort, amphitheatre, open space	Common use of GHR	✓
G-Venture Bar	Concert & Party Bar	Alcoholic & non-alcoholic & hot drinks & fresh juices	Provides service during the activity	Closed	Gloria Serenity Resort, beach concert area	Common use of GHR	✓
G-Venture Private Lodges	Concert & Party Bar	Alcoholic & non-alcoholic & hot drinks & fresh juices	Provides service during the activity	Closed	Gloria Serenity Resort, beach concert area	Subject to a fee	
Mini Bar	In-room mini bar	Alcoholic & soft drinks, tea, coffee, biscuits, chocolate, crispy apples, confectionery, crisps	During your stay	During your stay	Room	Refilled once a day	✓

POOLS AND BEACH



FEATURES

- Blue flag awarded
- 120 m long and clean sand-pebble beach
- Comfortable sunbeds
- Pier
- Opening and closing dates and times of beaches and pools may vary according to weather conditions

FACILITIES

- Snack restaurant
- Beach Bar
- Pier Bar
- Beach pavilions (surcharge)

BEACH ACTIVITIES AND SERVICES

- Beach volleyball
- Beverage service to sunbeds (soft drinks) are served periodically between 10:00 - 18:00
- Beach towel service
- Security
- Lifeguard

PAID SERVICES

- Water sports activities (08:00 - 20:00)
- Daily pavilion use (09:00 - 18:00)
- SPA treatment area

PAVILION DETAILS:

- Working hours 09:00 - 18:00
- Shared butler service
- Special service for all pavilion guests
- 12:00 - 16:00 snacks from the menu
- Beverage menu within hotel concept
- Mini bar, safe, ventilator
- Towel
- Waiter call button

GLORIA VERDE RESORT POOLS	STATE OF USE	OUTDOOR	INDOOR	SEA WATER	SWEET WATER	DEPTH	AREA	SUMMER SEASON	WINTER SEASON	HEATED
Main Outdoor Pool 1	Communal area	✓			✓	140 cm	400 m ²	08:00-19:00	Open	✓
Main Outdoor Pool 2 (deep zone)	Communal area	✓			✓	200 cm	350 m ²	08:00- 19:00	Closed	
Main Outdoor Pool 3	Communal area	✓			✓	140 cm	225 m ²	08:00- 19:00	Closed	
Outdoor Children Pool	Communal area	✓			✓	35 cm	15 m ²	08:00- 19:00	Closed	
Children Sand Pool	Communal area	✓			✓	50 cm	320 m ²	08:00-19:00	Open	✓
Indoor pool (in the SPA centre)	Communal area		✓		✓	140 cm	83 m ²	08:00-20:00	08:00- 20:00	✓
Indoor Children's Pool (in the SPA centre)	Communal area		✓		✓	35 cm	9 m ²	08:00-20:00	08:00-20:00	✓
Thalasso Indoor Pool (in the SPA centre) There is a small whirlpool in the outside area that can be accessed from the pool There is a lift for disabled guests to access the pool	Communal area		✓	✓		140 cm	65 m ²	09:00-19:00	09:00-19:00	✓
Select Villa Pool*	Communal area	✓			✓	140 cm	430 m ²	08:00- 19:00	Closed	
Select Villa Child Pool*	Communal area	✓			✓	35 cm	14 m ²	08:00-19:00	Closed	
Presidential Villa Pool	Private	✓			✓	140 cm	120 m ²		Closed	
Aquapark Pool	Communal area	✓			✓	120cm-160cm	61 m ²	10:00-12:00 14:00-16:00	Closed	
Olivium Pool	Communal area	✓			✓	140 cm	500 m ²	08:00-20:00	08:00-20:00	✓
Olivium Children Pool	Communal area	✓			✓	50 cm	25 m ²	08:00-20:00	08:00-20:00	✓

- The Select Villa communal pool is exclusively for the use of guests staying in King Suite and Select Villas.
- Children under 12 years of age are not suitable to use the Thalasso pool in terms of safety and health.
- Children under 12 years of age should enter the pool under the supervision of their parents.
- Smoking is prohibited around the children's pool area.
- Sunbeds and towels are free of charge.
- Heating dates of heated pools may vary depending on weather conditions.

AQUAPARK

Gloria Verde Resort has a total of 12 slides, 5 for adults and 7 for children.



AQUAPARK	OPEN	SWEET WATER	DEEPNESS	ALAN	SUMMER SEASON	WINTER SEASON
Tube Slide	✓	✓	120 cm	23 m ²	10:00 – 12:00 / 14:00 – 16:00	Closed
Multi Slide	✓	✓	120 cm	23 m ²	10:00 – 12:00 / 14:00 – 16:00	Closed
Body Slide	✓	✓	120 cm	62 m ²	10:00 – 12:00 / 14:00 – 16:00	Closed
Space Hole + Tube Slide	✓	✓	160 cm	57 m ²	10:00 – 12:00 / 14:00 – 16:00	Closed

- For the safety and well-being of children under the age of 10, the use of the "Space Hole" slides is not permitted. Responsibility rests with parents or guardians.
- Entering the pool is strictly prohibited during periods when the Aquapark is closed.
- The Aquapark operates between 1 May and 31 October; operating dates and hours may vary depending on weather conditions.
- Guests must comply with lifeguard instructions and posted safety signs at all times.
- Hotel management reserves the right to close the Aquapark when deemed necessary.



ASKLEPION SPA & THALASSO

Certified Spa therapists with international experience, world-renowned care products, purifying and relaxing effect of purified sea water, seaweed and salt, Turkish bath, sauna, private hairdresser and much more...



DETAILS

1800 m² area
Located on the ground floor of the main building
It serves between 09:00 - 20:00 every day
Every day between 13:00 - 15:00, our guests under 12 years of age can use the Turkish bath, sauna and relaxation areas accompanied by their parents.
Children between 12 - 16 years of age are allowed to use the Turkish bath, sauna and relaxation areas between 13:00 - 15:00 to ensure the peace and well-being of our guests.
Children under 12 years of age are not suitable to use the Thalasso pool in terms of safety and health.

THALASSO

Specially purified seawater heated to 32 degrees, health-boosting therapies that accelerate blood circulation while purifying the body, special care cures that help your body regain lost minerals and whose formula is hidden in the depths of history...

SERVICES

Thalasso Pool (12+) 09:00 - 12:00 & 15:00 - 19:00
Indoor pool
Indoor children's pool
Rest area
Vital Bar
There is an accessible lift for guests with disabilities to reach the pool (Thalasso pool)
15 treatment rooms
1 private SPA Suite
Skin, face, and body treatments (world-famous brands such as Thermes Marins, Jüliette Armand and CACI Ultra)
Massages and treatments
1 private bath
Hairdresser services
Manicure - pedicure
1 Bio & 1 Fin sauna
1 Turkish bath
Ice fountain
Changing rooms with lockers
SPA Pavilion (closed in winter)

PAID SERVICES

All massage services
Special hammam services
All skin, face, and body care services
Hairdresser services
Manicure - pedicure
SPA cosmetics
SPA Pavilion



MEETINGS, ORGANISATIONS AND WEDDINGS

Meeting rooms and equipment are subject to additional charges.
Please contact our MICE department for special service and price details for meeting groups.



MEETING ROOM	LENGTH	WIDTH	ALAN	HEIGHT	BANKET	THEATRE	CLASS
Daphne I, II, III	32 m	16,5 m	528 m ²	6 m	350 Person	650 Person	380 Person
Daphne I	9,5 m	16,5 m	156 m ²	6 m	80 Person	120 Person	80 people
Daphne II	12,5 m	16,5 m	206 m ²	6 m	130 Person	230 Person	120 Person
Daphne III (Receives Daylight)	10 m	16,5 m	165 m ²	6 m	100 Person	180 Person	100 Person

As Gloria Hotels & Resorts, we would like to share your happiness as you set sail for the new beginning in your life.

Gloria Hotels & Resorts has an experienced cuisine with all kinds of flavours and an efficient team to make your wedding unforgettable. All you need to do is say 'YES'. Gloria Hotels & Resorts will take care of all the details...

At Gloria Hotels & Resorts we want to thank you for the trust you have put in us - and we promise to support you in all your special celebrations.



GLORIA VERDE RESORT - MAP





The World of Gloria



ACTIVITIES FOR CHILDREN AND TEENS

The following services are available for all guests of Gloria Hotels & Resorts.



GOGI VIM

Very Important Minis
1 – 3 Years

Gloria Serenity Resort
Gloria Golf Resort
Gloria Verde Resort

Highchairs and disposable bibs are available free of charge in all our restaurants.

Free of charge services (one-off items according to the number of babies in the family):

- Baby bottle washing brush
- Wet wipes (travel size)
- Feeding spoon
- Baby nail clippers
- Baby bottle
- Pacifier (+6 months)
- Nappies (only in case of emergency)
- Baby stroller

For the room (available on request):

- Baby cot
- Bed railing
- Toilet adapter
- Bedpan
- Washbasin step
- Baby bathtub
- Baby basin and detergent
- Glorian Baby Kit bag (0-3 years): Chicco body shampoo and hair shampoo, body lotion, sponge loofah and baby or child bathrobe (2-12 years)

Products used in Gogi Kids Club:

- Baby bottle warmer*
- Steriliser*
- Thermometer

* If there is a request for use in the room, guest relations are notified.

Products subject to a fee:

- Baby carriage
- Baby monitor

CHILDREN'S OUTDOOR AREAS

- Aquapark (Gloria Golf Resort & Gloria Verde Resort)
- Mini football pitch (Gloria Golf Resort & Gloria Verde Resort)
- Basketball court (Gloria Serenity Resort & Gloria Verde Resort)
- Children's pool with sandy floor (Gloria

Golf Resort & Gloria Verde Resort)

- Trampoline (Gloria Serenity Resort & Gloria Golf Resort on the beach) (summer season)
- Art Studio (subject to a fee) (Gloria Serenity Resort & Gloria Golf Resort)

EAGLE TEAM SPORTS ACADEMY

5 – 13 Years

Gloria Serenity Resort
Gloria Golf Resort
Gloria Verde Resort

1 May to 30 September.

Free group lessons:

- Gymnastics
- Swimming
- Football

Private lessons are subject to a fee

BABY SITTING SERVICE

1 – 12 Years

Gloria Serenity Resort
Gloria Golf Resort
Gloria Verde Resort

The nursing service is provided subject to a fee.

For babies/children over 1 years old, up to a maximum of 3 hours a day, service is provided subject to availability. Caring hours may not be divided during the day.

For babysitting service, please inform Guest Relations or Gogi Kids Club at least 24 hours in advance. For requests received on the same day, babysitting service is offered subject to availability.

GOGI MINI

4-12 Years

Gloria Serenity Resort
Gloria Golf Resort
Gloria Verde Resort

Children's playroom in the main building

- Playstation
- Handicraft activities

GOGI KIDS CLUB

4 – 12 Years

Many fun activities for our little guests, from handicraft activities, sports activities, competitions, shows, birthday organisations.

Gloria Golf Resort

Gloria Serenity Resort

- Child reception and registration desk

· Baby activity area

· Playroom (Lego, play dough, baby playground)

- Activity area
- Fully equipped kitchen
- Sleeping room (changing unit)
- Gymnasium

· Cinema room

· Mini amphitheatre

· Mini disco

Gloria Verde Resort

· Play and activity area

· Baby area

· Kitchen

· Mini golf course

· Activity and playground in the garden

· Mini play park

· Mini disco

GOGI FUN JUNGLE

1 – 14 Years

Gloria Golf Resort
Gloria Serenity Resort

Children under 5 years old can benefit from Fun Jungle under the supervision of their parents.

Our playgrounds in Gogi Fun Jungle:

Comfyland 1 - 6 years

Gogi Town 1 - 12 years

Crazy Jungle 5 - 12 years

Playstation & interactive Game Zone

5 - 14 years

TEENAGE CLUB

13 – 17 Years

Gloria Serenity Resort
Gloria Golf Resort
Gloria Verde Resort

1st June – 31st August

Outdoor sports and activities: mini football,

darts, table tennis, basketball, football,

water polo, aquapark.

INFANT AND CHILD NUTRITION

CHILDREN'S BUFFET

The children's buffet in the main restaurants of Gloria Hotels & Resorts is open from 01 May to 31 October.

Lunch 12:30 - 14:30

Dinner 19:00 - 21:30

BABY MENU & WHAT-WHEN-WHERE SERVICE

You can order from the baby menu that we have carefully prepared for your baby 24/7 and ensure that it reaches wherever you want, whenever you want.

With the What-When-Where Service, you can provide the recipe for your baby's food and ensure that it arrives wherever and whenever you want.

If you wish, you can prepare your baby's food yourself by using the Gogi Kids Club kitchen.

Specified services and special requests should be notified to guest relations. Related services are provided free of charge for all children aged 00 - 03,99 years staying in our Gloria Hotels & Resorts hotels.

HIPP BRAND PRODUCTS

- Feeding bottle formula
- Organic rice pudding
- Fruit juices
- Teas (for babies and nursing mothers)
- Cereal-based supplementary foods
- Organic biscuits
- Snacks
- Food in jars (organic fruit and vegetable, whole grain products)

Children's Activities	Location	Details	Summer Season	Winter Season
Babysitting service 1 - 12 years old	Gloria Serenity Resort Gloria Golf Resort Gloria Verde Resort	Additional charges apply	09:00 – 02:00	10:00 – 21:00
Gogi Mini 4 – 12 Years	Gloria Serenity Resort Located in the main building	Children's playroom Children under 4 years old can benefit under parental supervision	16:00 – 23:00	16:00 – 23:00
Gogi Kids Club 4 – 12 Years	Gloria Serenity Resort & Gloria Golf Resort (Common Use)	It is a common use area serving all Gloria Hotels & Resorts guests	1 April to 31 October 09:00 - 17:00 (under the supervision of Gogi Kids Club staff) 17:00 - 23:00 (Under the supervision of their families)	From 1 November to 31 March 10:00 - 17:00 (under the supervision of Gogi Kids Club staff) 17:00 - 21:00 (Under the supervision of their families)
Gogi Kids Club 4 – 12 Years	Gloria Verde Resort	It is a common use area serving all Gloria Hotels & Resorts guests	1 April to 31 October 09:00 - 17:00 (under the supervision of Gogi Kids Club staff) 17:00 - 23:00 (Under the supervision of their families)	1 November to 31 March 10:00 - 17:00 (under the supervision of Gogi Kids Club staff) 17:00 - 21:00 (Under the supervision of their families)
Gogi Fun Jungle 1 – 14 Years	Gloria Serenity Resort & Gloria Golf Resort (Common Use)	It is a common use area serving all Gloria Hotels & Resorts guests Children under 5 years old can benefit from Fun Jungle under the supervision of their parents	From 1 May to 31 October 10:00 – 23:00 (under the supervision of Gogi Fun Jungle staff)	Closed
Gogi Teenage Club 13 – 17 Years	Gloria Serenity Resort Gloria Golf Resort Gloria Verde Resort		1 June to 31 August	Closed
Eagle Team Sports Academy 5 – 13 Years	Gloria Serenity Resort & Gloria Golf Resort (Common Use) Gloria Verde Resort	Group lessons free of charge Private lessons are subject to a fee	1 May - 30 September	Closed
Trampoline	Gloria Golf Resort & Gloria Serenity Resort Resort is located on the beachfront	It is a common use area serving all Gloria Hotels & Resorts guests All children can benefit under parental supervision	Open	Closed
Gloria Mini Farm	Located between Gloria Serenity Resort and Gloria Golf Club	It is a common use area serving all Gloria Hotels & Resorts guests All children can benefit under parental supervision	09:00 – 21:00	09:00 – 18:00

Service dates/hours may vary

GLORIA EVENT & FIT GLORIA DAILY ACTIVITIES

Free services:

- Bocchia
- Zumba
- Pilates
- Beach volleyball
- Aerobics
- Yoga

- Gymnastics
- Table tennis
- Mini football
- Basketball
- Dart
- Archery (at Gloria Verde Resort)

Services subject to a fee:

- Karaoke
- Personal training
- Activities might change according to weather conditions.

Entertainment & Activity Areas	Concept	Location	Details	Summer Season	Winter Season
G-Venture	Bar & outdoor party and concert area	Located on the beach between Gloria Golf Resort & Gloria Serenity Resort	It is a common use area serving all Gloria Hotels & Resorts guests	21:00 – 00:00	Closed
Arena Amphitheatre	Bar & show area	Gloria Golf Resort and Gloria Serenity Resort	It is a common use area serving all Gloria Hotels & Resorts guests Has a capacity of 1.061 people	During the activity	Closed
Insomnia Night Club +18 Age	Bar & nightclub	Located in the Game Center at Gloria Serenity Resort	It is a common use area serving all Gloria Hotels & Resorts guests	23:00 – 02:00	23:00 – 02:00 Saturday only
Wurlitzer Bar	Bar	Located in the Game Center at Gloria Serenity Resort	It is a common use area serving all Gloria Hotels & Resorts guests	16:00 – 00:00	16:00 – 00:00
Game Center	Entertainment centre	Located in the Game Center at Gloria Serenity Resort	It is a common use area serving all Gloria Hotels & Resorts guests Bowling (6 lanes), billiards, electronic games, virtual reality Game Centre services are subject to an extra charge	16:00 – 00:00	16:00 – 00:00
Verde Amphitheatre	Bar & show area	Gloria Verde Resort	Only for Gloria Verde Resort guests has a capacity of 350 people	During the activity	Closed
Neptuno Bar	Bar & entertainment area	Gloria Verde Resort	Gloria Verde Resort welcomes its guests with professional live music groups, DJ performances and concept parties	1 May - 15 October on certain days of the week 22:00 – 00:00	Closed
Verde Game Center	Entertainment centre	Gloria Verde Resort	Bowling (4 lanes), billiards, electronic games Game Centre services are subject to an extra charge	16:00 – 00:00	16:00 – 00:00
Tennis courts	Sport	Gloria Serenity Resort	There are 3 clay courts in total Court use & lighting is free of charge	09:00 – 21:00	09:00 – 21:00
Tennis courts	Sport	Gloria Golf Resort	There are 5 courts in total: 2 Hard Court 1 Synthetic Turf Tennis Court 2 Padel Tennis Court Court use & lighting is free of charge	09:00 – 21:00	09:00 – 21:00
Tennis courts	Sport	Gloria Verde Resort	There is 1 tartan court Court use & lighting is free of charge	09:00 – 21:00	09:00 – 21:00
Tennis lessons	Private Lesson	Gloria Serenity Resort Gloria Golf Resort Gloria Verde Resort	Private lessons and tennis equipment are available for a fee	Optional	Optional
Fit Gloria +16 Age	Gym	Gloria Serenity Resort Gloria Golf Resort Gloria Verde Resort	Use of the hall and equipment is free of charge, personal coaching services are chargeable	08:00 – 20:00	08:00 – 20:00

FIT GLORIA

Fit Gloria is equipped with Technogym brand fitness equipment.



GLORIA SERENITY RESORT

- Omnia
- Skill mill
- Rowing cardio
- Power plate
- Chin up
- Hyperextension coffee table
- Shuttle coffee table
- Bench coffee table
- Dumbbell set (4 kg - 32 kg)
- 4-way station
- Smith machine
- Leg press
- Biceps curl coffee table
- Cross over
- Shoulder press machine
- Leg extension-curl
- Abduction-adduction
- Chest press
- Abdominal machine
- Stair climbing
- Elliptical
- Elliptical-stepper
- Treadmill
- Horizontal bicycle
- Vertical bicycle
- Technogym home set



GLORIA GOLF RESORT

- Leg press machine
- Adductor machine
- Leg curl machine
- Reverse fly machine
- Abdominal crunch machine
- Vertical traction machine
- Shoulder press machine
- Crunch bench
- Biceps curl bench
- Chest press machine
- Seated row machine
- Smith machine
- Multi cable machine
- Bench
- Skillrow
- Exercise bike
- Elliptical
- Elliptical stepper
- Spinning bike
- Climbmill
- Power plate
- Home set
- Dumbbell set (2 kg - 22 kg)
- Z bar
- Long straight bar
- Short straight bar
- Treadmill

GLORIA VERDE RESORT

- Spinning bike
- Elliptical bike
- Horizontal bicycle
- Treadmill
- Climbmill
- Air walker
- Conditioning shovel
- Smith machine
- Biceps stand
- Flat coffee table
- Crunch bench
- Chin up
- Dual adjustable pulley trunk / lower body / upper body machine
- Chest press machine
- Low row machine
- Abductor / adductor machine
- Leg extension / curl machine
- Leg press machine
- Vertical traction machine
- Shoulder press machine
- Dumbbell set (4 kg - 22 kg)





POWERED BY
TRACKMAN

GLORIA GOLF CLUB



Gloria Hotels & Resorts guests have the privilege to use the only 45-hole golf course of the Mediterranean Riviera with its two 18-hole championship courses and a 9-hole Verde Golf Course, designed by the famous golf architect Michel Gayon and preferred not only by golf enthusiasts but by professionals as well. Gloria Golf Club has taken a major step into the world of driving range technology, by adding a TrackMan system that looks set to revolutionise the Turkish resort's range experience as the very first of its kind to be installed by a Turkish resort.

Gloria Golf Training Academy & Driving Range
5 Putting Greens
6 Bunker Greens
7 Chipping & Pitching Greens

The Gloria Golf Training Academy and range area is the largest purpose built training facility in Turkey. Trackman Range, the state-of-the-art system is used by more than 10,000 professionals and instructors across the world, utilising a doppler radar system to display a variety of fun games and ball

tracking software to 27-inch touchscreens in each bay. For more experienced players who are looking to master their game ready for application out on the three courses at Gloria Golf Club, the software allows users to track and view ball speed, carry, launch angle, precise distances and shot shaping. This is displayed across the 48 screens on the range, giving golfers the crucial information required to improve their game. Lessons for both individuals and groups are available from Our PGA and TPGA qualified teaching professionals, Nike, Taylor Made and Titleist golf clubs are available to use, while the indoor Arena uses Flightscope and SAM putt lab technology. The facilities include five putting greens, six bunker greens, seven chipping and pitching greens, a wedge practice area, 48 covered range bays and 50 grass tee bays. The Gloria Golf Training Academy covers an area of 3500 m².
Greens: Bermuda grass tifway 328
Fairway: Bermuda grass tifway 419

The Gloria Golf Club, designed by the acclaimed French golf architect, Michel Gayon, offers a total of 45 holes with two

18-hole championship courses and a 9-hole course. It is the region's and Turkey's largest golf club, even Europe's second largest one. Located in one of the world's finest holiday destinations in Belek, Antalya, Gloria Hotels & Resorts is listed among the world's top hotels for its architecture, services and amenities. Gloria Golf Club is recognized as one of the best in the region, which is Turkey's golf heaven known to offer a favorable climate 12 months of the year. It also hosts internationally acclaimed golf events.

Gloria Golf Club courses have been crowned with esteemed and selected awards of the world of golf for their excellent technical maintenance and superior design. First Class services including fine gourmet experiences are presented to our much valued guests. You will be enchanted by the nature, wildlife and weather our region boasts. Our first class experience will make you feel at home. We, as Gloria, feel that you are a much valued part of our great family. Here, we present you with the finest, most privileged and selected experiences to enjoy.



POWERED BY
TRACKMAN

GLORIA GOLF CLUB



GLORIA OLD COURSE

18 HOLE | 72 PAR | 6,529 m | 772,000 m²

The Championship Old Course offers a true test with tree-lined fairways set within a 772,000 m² pine forest with undulating greens adding up to 600 m². There are seven fixed water level lagoons within the Gloria Old Course. (57,000 m²)

Start Date of Construction: July 1995, Opening: September 1997
Handicap: Female / Male 40, 36
Greens: Bermuda Grass | Fairway: Bermuda Grass
No. of Bunkers: 63 (16,000 m²)



GLORIA NEW COURSE

18 HOLE | 72 PAR | 6,523 m | 700,000 m²

The Championship New Course is a delight to play with a mixture of tree-lined fairways and water hazards coming into play on no less than eighteen holes. The Course features testing greens, which makes the New Course a real championship challenge. There are four fixed water level lagoons within the Gloria New Golf Course. (57,000 m²)

Start Date of Construction: December 2004, Opening: November 2005
Handicap: Female / Male 40, 36
Greens: Bermuda Grass | Fairway: Bermuda Grass
No. of Bunkers: 67 (15,000 m²)



GLORIA VERDE COURSE

9 HOLE | 35 PAR | 2,923 m | 450,000 m²

The Gloria Verde course is certainly no walk in the park. Opened in 2001 and set in 450,000 m², it has two large lakes, 28 bunkers and is one of the best nine-hole courses in Europe.

Start Date of Construction: November 2000, Opening: November 2001
Handicap: Female / Male 40, 36
Greens: Bermuda Grass | Fairway: Bermuda Grass
No. of Bunkers: 28

GLORIA SELECT NEW COURSE

18 HOLE | 72 PAR | 6,350 m

The Gloria Select 18 Hole combines, the best of the Gloria Courses

GLORIA SELECT OLD COURSE

18 HOLE | 72 PAR | 6,492 m

The Gloria Select 18 Hole combines, the best of the Gloria Courses

GOLF	SUMMER SEASON	WINTER SEASON
Golf & Golf Lessons (extra)	With reservation	With reservation
Group Golf Lessons at Gloria Golf Club (1 hour on Monday, Wednesday, Friday) Capacity maximum 40 person	Free between 15.06-31.08 10.00 - 11.00	Closed

GLORIA SPORTS ARENA



GENERAL INFORMATION;

Gloria Sports Arena (GSA) is a modern sports facility offering outdoor, indoor and water sports facilities with high quality accommodation, nutrition and sports health services.

Gloria Sports Arena is a modern sports complex with indoor, outdoor and aquatic sports facilities. It is built on 105.000 m² (10.5 hectare area) in Belek-Antalya-Turkey, where over 50 different sports disciplines and camps are hosted. Facilities are equipped and built by using the most modern technological developments in sports.

ACCOMMODATION;

Gloria Sports Arena offers 100 modernly designed rooms overlooking the stadium. The rooms are specially designed for the needs and comfort of individual athletes and sports teams. There are 82 standard rooms (30 m²), 10 suites (63 m²) and 8 disabled rooms (30 m²).

SPORTS FIELDS;

■ OUTDOOR SPORTS

The 35 000 m² outdoor facilities include a stadium with a capacity of 1700 spectators and various sports fields. In these areas sports that can be practised;

Olympic Sports

- ATHLETICS: Jumping - Pole Vault Long Jump - Triple Jump - High - Jumping - Throwing - Javelin Throwing - Hammer Throwing - Discus Throw - Shot Put - Combined - Disciplines - Running
- BICYCLE: Road Bike - Mountain Bike
- FIELD HOCKEY
- FOOTBALL
- GOLF
- CANO - Still Water Canoeing
- MODERN PENTATHLON
- ARCHERY
- RAGBI - Rugby 7
- SPORT CLIMBING - Short Rock
- TENNIS
- TRIATLON
- BEACH VOLLEYBALL

IOC Recognised Sports

- AMERICAN FOOTBALL
- Flying Disc - Ultimate Frisbee
- RAGBI

Other Sports

- SLACKLINING

■ INDOOR SPORTS

The 6800 m² indoor sports hall in the sports facilities can be divided into 4 separate fields. It also has a capacity of 1200 spectators thanks to its telescopic tribunes. The facility also has studios suitable for different activities.

Sports that can be done in these areas;

Olympic Sports

- BADMINTON
- BASKETBALL
- BOKS
- DANCE - Break Dance
- FENCING
- HALTER
- HANDBALL
- FIGHTING
- JUDO
- GYMNASTICS - Rhythmic Gymnastics - Trampoline
- TABLE TENNIS
- TAEKWONDO
- VOLLEYBALL

IOC Recognised Sports

- FOOTBALL - Futsal
- KARATE
- KICKBOXING
- MUAYTHAI

Other Sports

- DANCE - Latin Dances - Ballroom Dances
- DEFENCE SPORTS - Aikido - Jiu-jitsu - K1
- GROUP LESSONS - Indoor Cycling
- Cross-training - Suspension Training
- POWERLIFTING

■ WATER SPORTS

5800 m² Water Sports centre with 10 lane outdoor Olympic pool, 5 lane indoor 50m pool, 5m depth jumping pool, 6 lane short course (25m) pool, water polo and rehabilitation. It provides year-round service in water sports with its pools. The pools are equipped with Omega exit platforms and Omega time measurement systems.

Sports that can be done in these areas;

Olympic Sports

- ARTISTIC SWIMMING
- JUMPING
- WATER BALL
- SWIMMING
- MARATHON SWIMMING
- IOC Recognised Sports
- UNDERWATER SPORTS - Underwater American
- Football - Underwater Hockey

Other Sports

- SCUBA DIVING (Pool)

GLORIA SPORTS ARENA



GLORIA SPORTS ARENA SPORTS HEALTH & PERFORMANCE CENTRE (GSA SSPM)

Designed to meet all the needs of athletes, Gloria Sports Arena's Sports Health & Performance Centre (GSA SSPM) offers medical, rehabilitation and sports performance enhancement services. The centre serves not only athletes but also in-hotel and external guests.

It offers a comprehensive portfolio of services in sports medicine, sports science, athletic performance and sports physiotherapy led by Sports Medicine and Sports Science Specialists with a team of experts and state-of-the-art equipment.

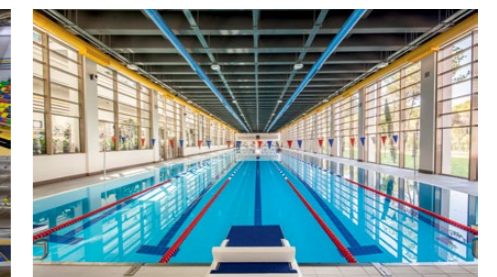
Important anthropometric, physiological, biomechanical, nutritional, skill development and past injury-related parameters that determine sports performance can be evaluated, monitored and improved.

GSA SSPM provides a wide range of sports health services covering the prevention, treatment, physiotherapy and rehabilitation of sports-related injuries of elite, amateur and recreational athletes. SSPM provides healthcare not only to athletes, but also to patients of all ages and levels of physical activity who can benefit from the unique combination of services.

ORGANISATION OF MEETINGS, CONFERENCES AND TEAMWORK

In-house meetings, conferences and teamwork organisations can be hosted in the meeting rooms detailed in the table below. At the same time, Gloria Sports Arena offers 'Corporate Wellness Packages' that make it possible to share the experience gained from sports professionals with the professionals of the business world. You can contact our MICE and/or Sports departments for special service and price details of such organisations;

MEETING ROOMS	WIDTH	LENGTH	AREA	HEIGHT	BANQUET	U SHAPE BANQUET	THEATER	CLASS
Aspendos Meeting Room	6,2 m	10,2 m	63,24 m ²	3,5 m	20 Pax	22 Pax	40 Person	24 Person
Olympos Meeting Room	8,6 m	10,2 m	87,5 m ²	3,5 m	30 Pax	22 Pax	60 Person	36 Person
Termessos Meeting Room	6,5 m	10,2 m	66,3 m ²	3,5 m	20 Pax	22 Pax	40 Person	24 Person
Aspendos & Olympos	14,8 m	10,2 m	150,96 m ²	3,5 m	50 Pax	40 Pax	120 Person	80 Person
Olympos & Termessos	15,1 m	10,2 m	154,02 m ²	3,5 m	50 Pax	40 Pax	120 Person	80 Person
Aspendos & Olympos & Termessos	21,3 m	10,2 m	217,26 m ²	3,5 m	80 Pax	60 Pax	160 Person	110 Person



GLORIAN MEMBER CLUB



Join the Glorian Member Club and enjoy exclusive benefits from the spa to the golf facilities and more.

Gloria Loyalty Program aim at corroborating the bond between guests and the brand by offering advantages to Gloria Hotels & Resorts guests.

for detailed information;



WALKING AND RUNNING PATH



Gloria Hotels & Resorts offers a peaceful walking trail and running path through lush green nature and bird calls.

walking and running route map



GLORIA HOTELS & RESORTS - MAP

GLORIA HOTELS & RESORTS - MAP



GLÖRIA
HOTELS & RESORTS

BELEK, ANTALYA - TÜRKİYE

•

+90 242 710 06 06

•

info@gloria.com.tr

•

www.gloria.com.tr